

# *Assessing fate and transport issues of the DWH oil spill using simulations and merged datasets*

*Pat Fitzpatrick*

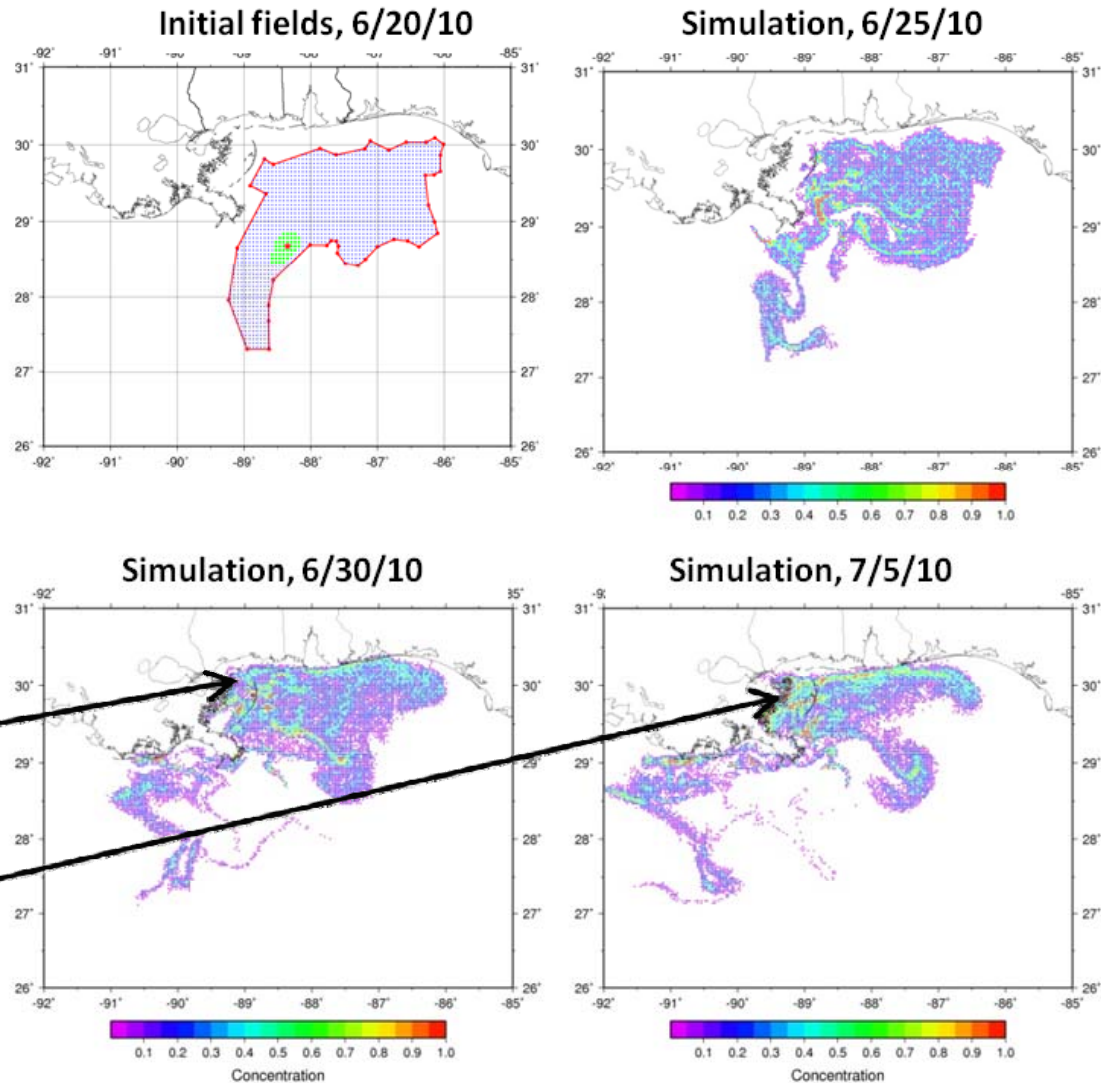
*Geosystems Research Institute*

*Mississippi State University*

- *The influence of cyclones on the DWH oil spill*
- *Update on datasets to validate oil spill simulation*

# The influence of cyclones on the Deepwater Horizon Oil Spill

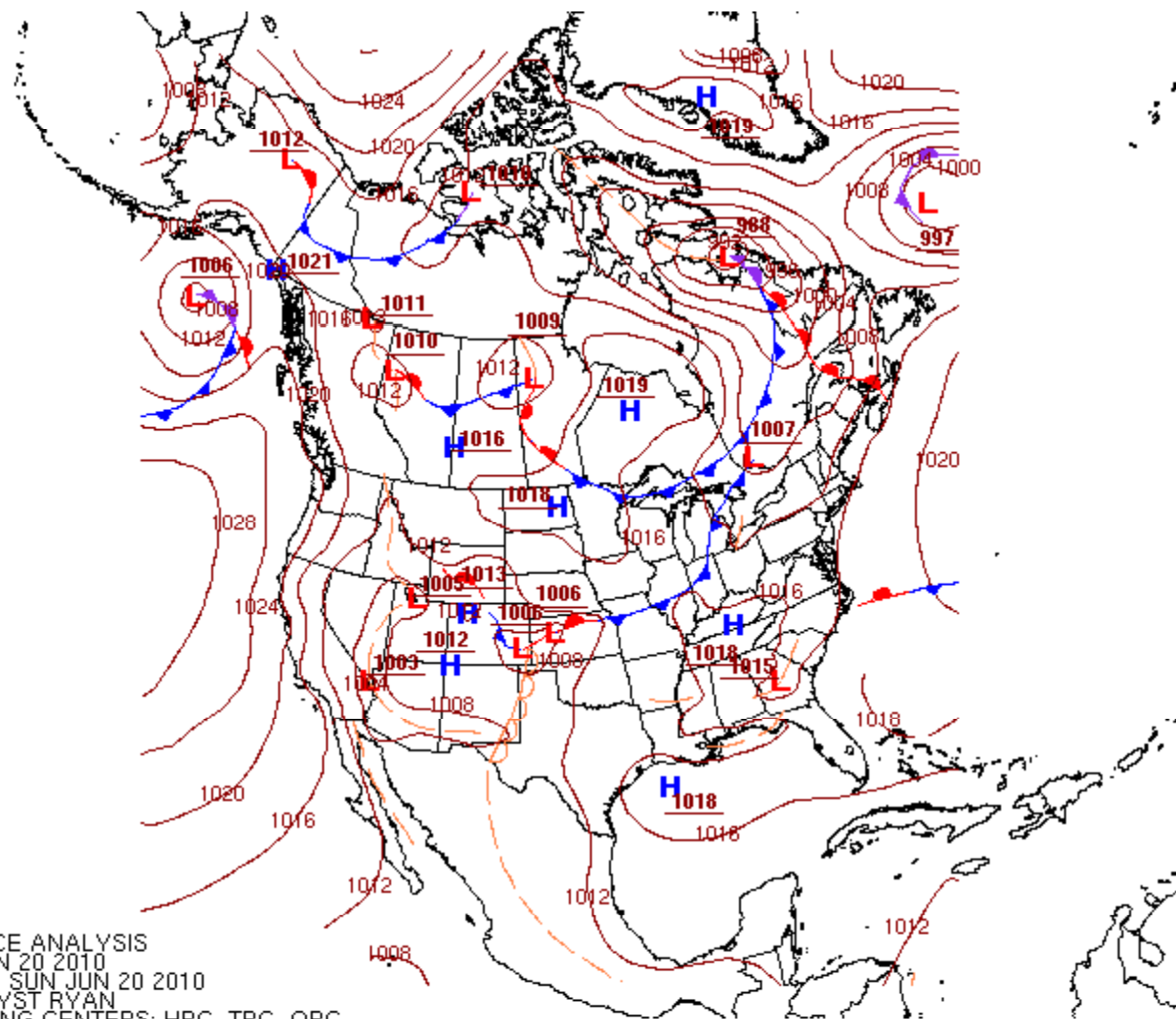
Oil spill simulation from 6/20/10-7/10/10 using AMSEAS NCOM data



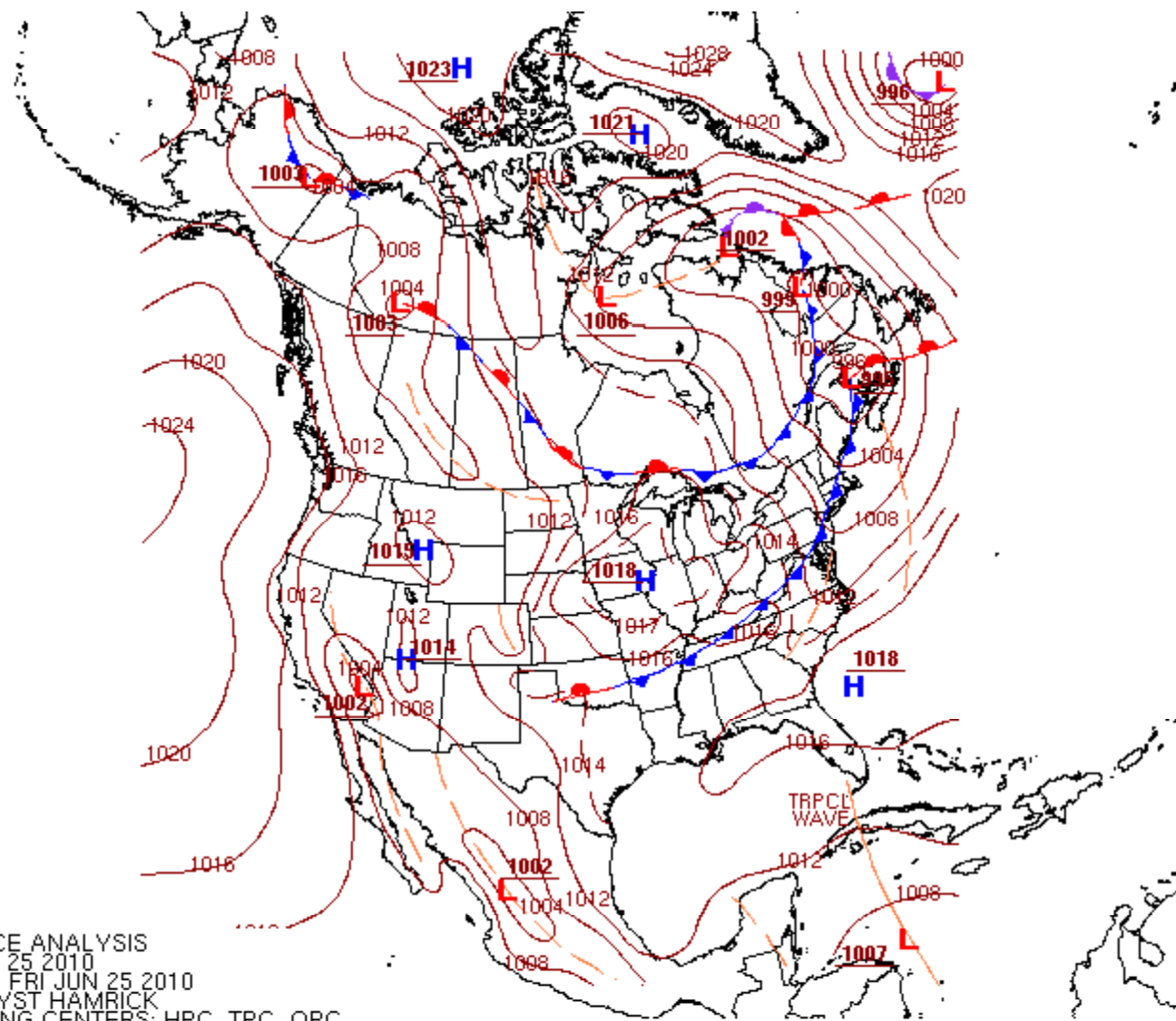
Note inshore movement of oil starting late June

# Model description

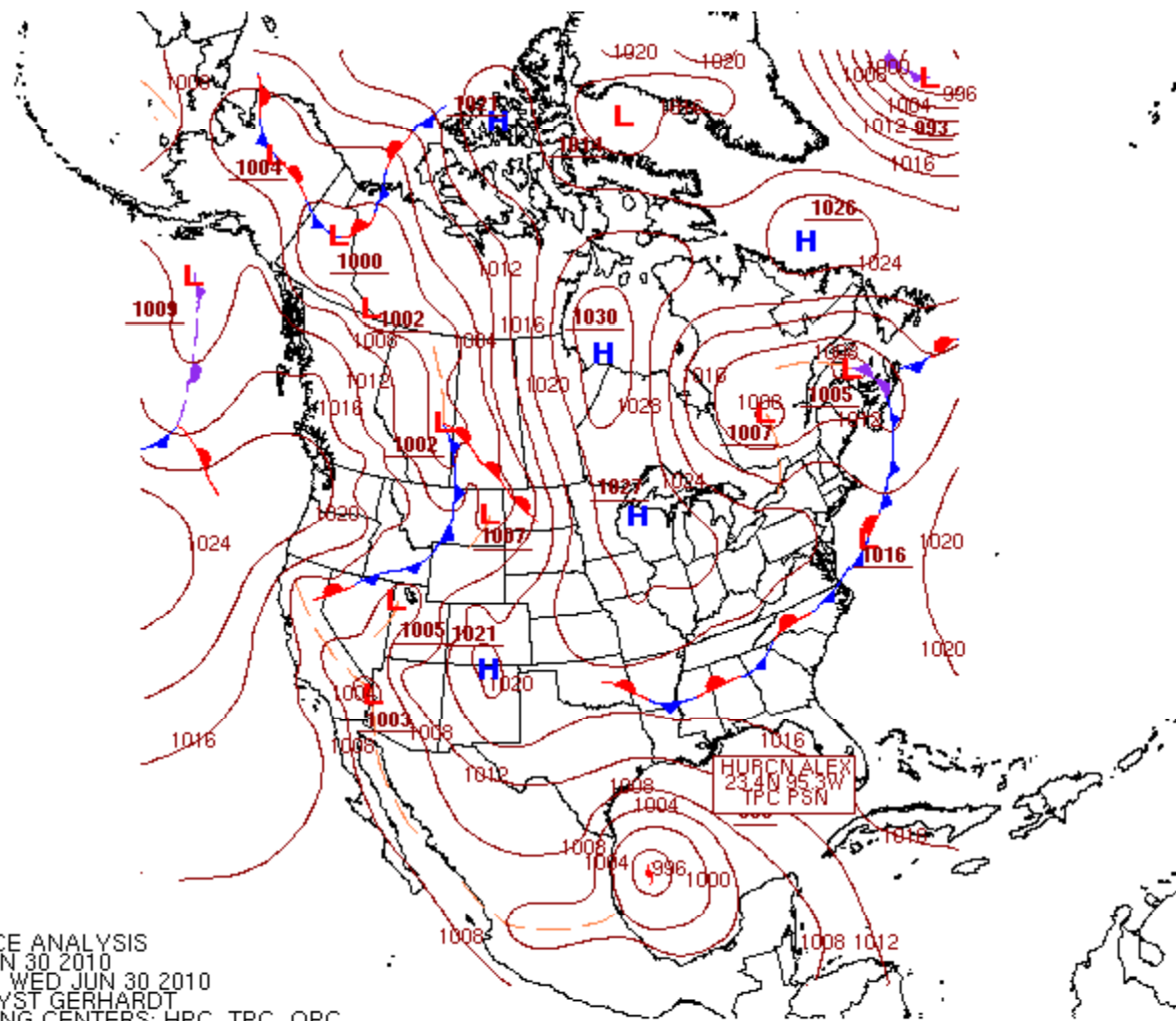
- Lagrangian particle tracker with random walk diffusion
- Input consisted
  - i. latitude and longitude parcel positions in the oil-contaminated area
  - ii. wind (validation show reasonably accurate with absolute errors of  $1.4 \text{ ms}^{-1}$  and  $33 \text{ deg}$ ).
  - iii. Current (validation to be shown in this talk)
  - iv. array of pseudo-random numbers (from Mersenne Twister algorithm, initial seed from machine noise)
- New parcels were released damaged Macondo rig location at each timestep
- Twenty-five parcels were released at each position, and when combined with a  $10 \text{ m}^2\text{s}^{-1}$  diffusion coefficient, resulted in a natural trajectory spread with time
- Initial positions based interpretation on
  - i. NASA MODIS
  - ii. SAR imagery from <http://www.cstars.miami.edu>
  - iii. NOAA/NESDIS Satellite Analysis Branch (SAB) experimental surface oil analysis products at <http://www.ssd.noaa.gov/PS/MPS/deepwater.html>
  - iv. NOAA's Office of Response and Restoration oil trajectory maps at <http://response.restoration.noaa.gov>
- Parcels advected at 80% of the ocean current speed and at 3% of the wind speed. Bilinear interpolation of wind and current applied from model grid to parcel location.



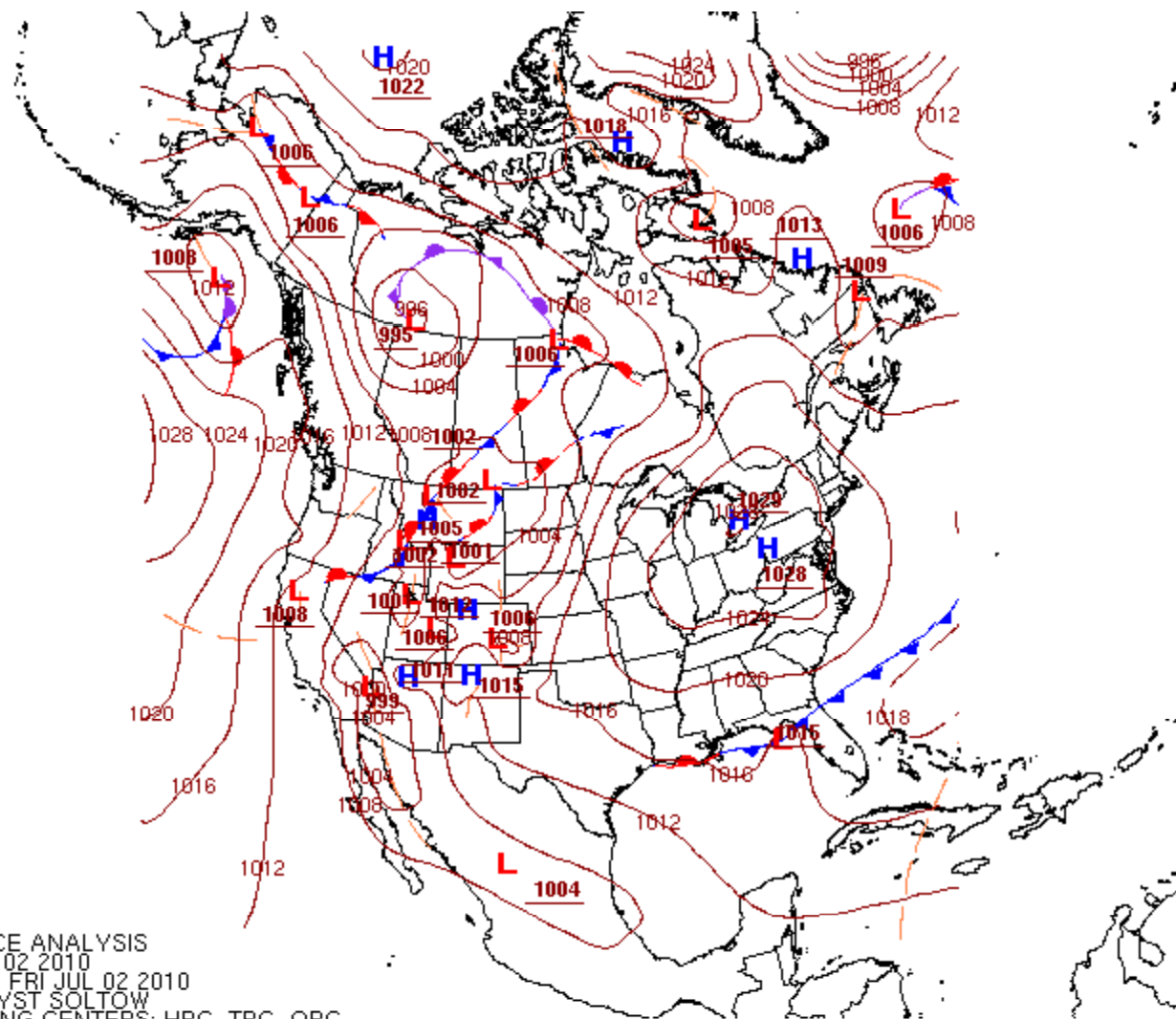
0000Z SURFACE ANALYSIS  
 DATE: SUN JUN 20 2010  
 ISSUED: 0128Z SUN JUN 20 2010  
 BY HPC ANALYST RYAN  
 COLLABORATING CENTERS: HPC, TPC, OPC



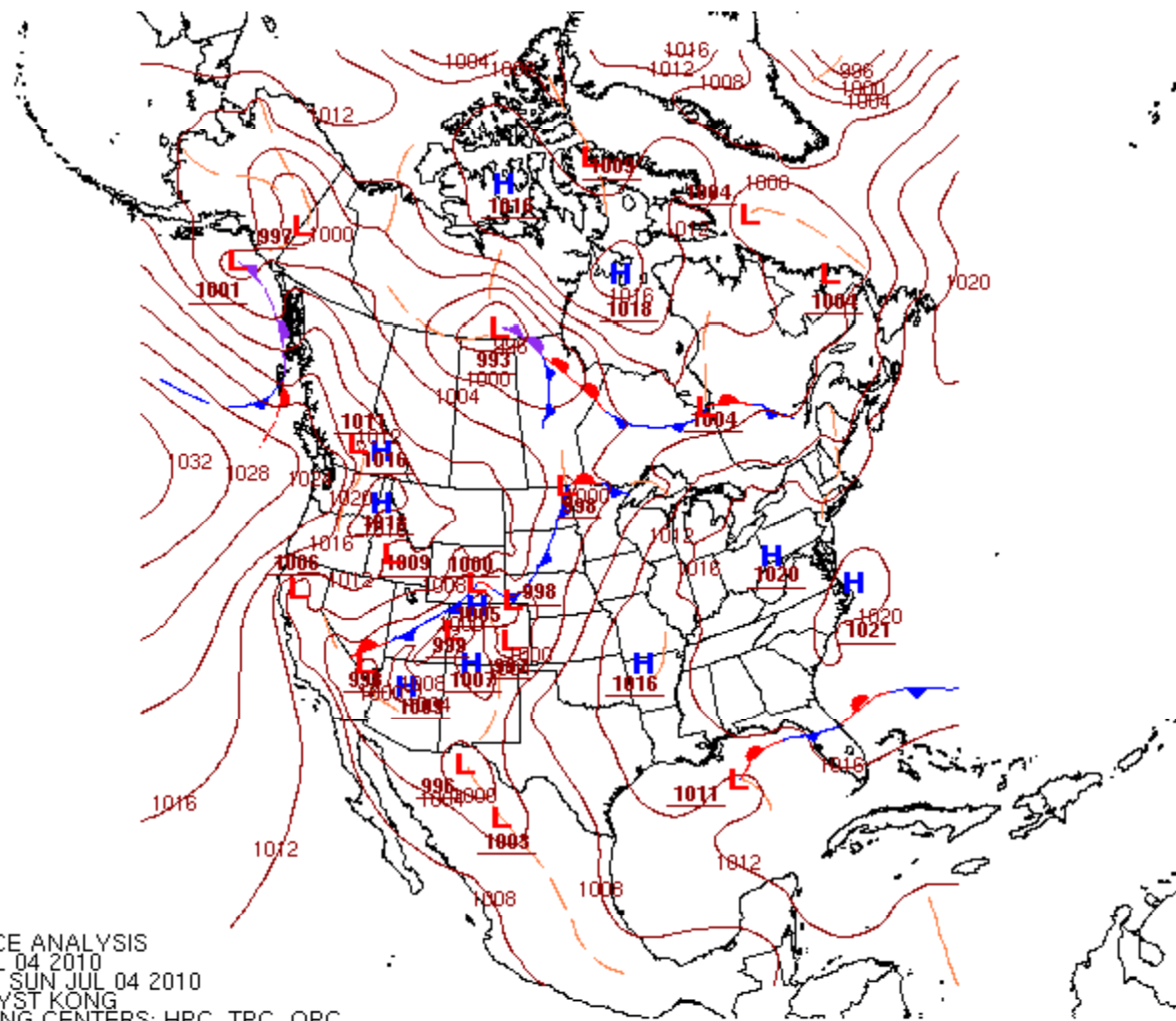
0000Z SURFACE ANALYSIS  
 DATE: FRI JUN 25 2010  
 ISSUED: 0128Z FRI JUN 25 2010  
 BY HPC ANALYST HAMRICK  
 COLLABORATING CENTERS: HPC, TPC, OPC



1200Z SURFACE ANALYSIS  
 DATE: WED JUN 30 2010  
 ISSUED: 1335Z WED JUN 30 2010  
 BY HPC ANALYST GERHARDT  
 COLLABORATING CENTERS: HPC, TPC, OPC

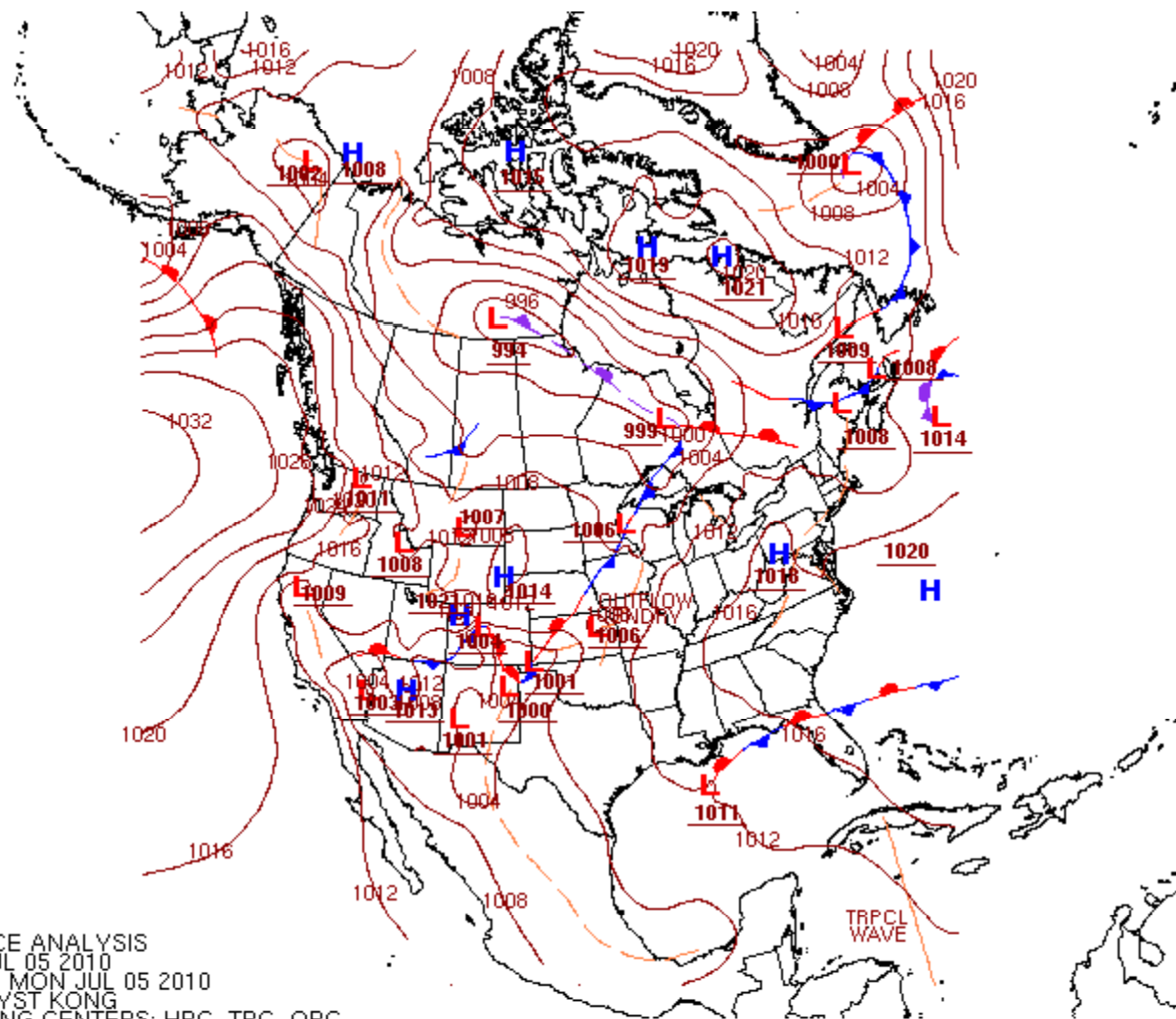


1200Z SURFACE ANALYSIS  
 DATE: FRI JUL 02 2010  
 ISSUED: 1333Z FRI JUL 02 2010  
 BY HPC ANALYST SOLTOW  
 COLLABORATING CENTERS: HPC, TPC, OPC



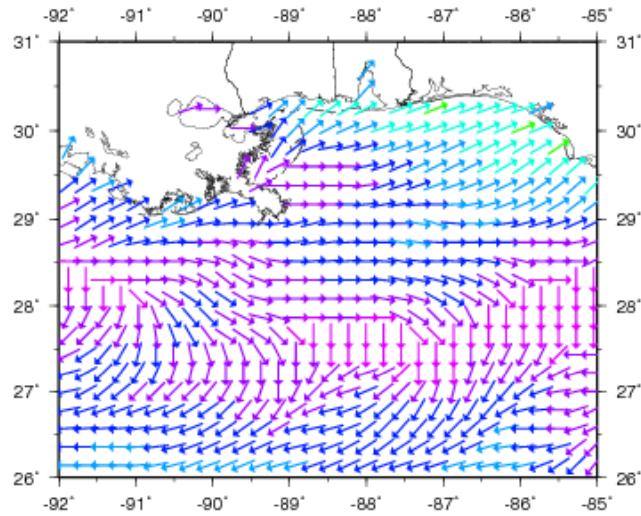
0000Z SURFACE ANALYSIS  
 DATE: SUN JUL 04 2010  
 ISSUED: 0130Z SUN JUL 04 2010  
 BY HPC ANALYST KONG  
 COLLABORATING CENTERS: HPC, TPC, OPC



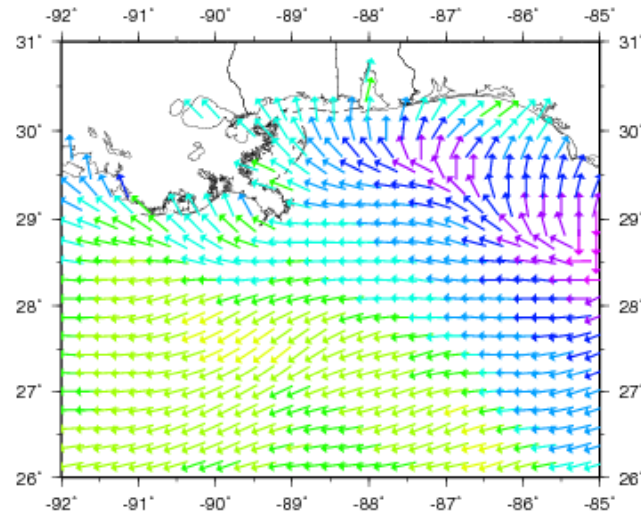


0000Z SURFACE ANALYSIS  
 DATE: MON JUL 05 2010  
 ISSUED: 0139Z MON JUL 05 2010  
 BY HPC ANALYST KONG  
 COLLABORATING CENTERS: HPC, TPC, OPC

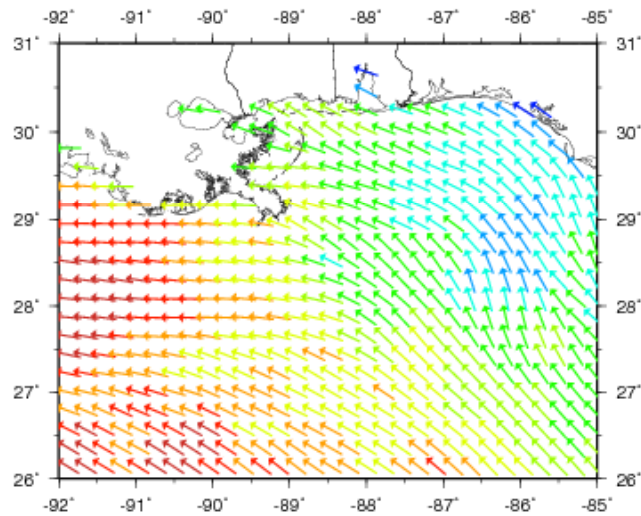
**6/20/10**



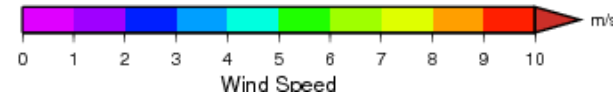
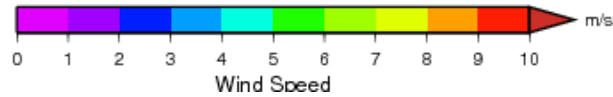
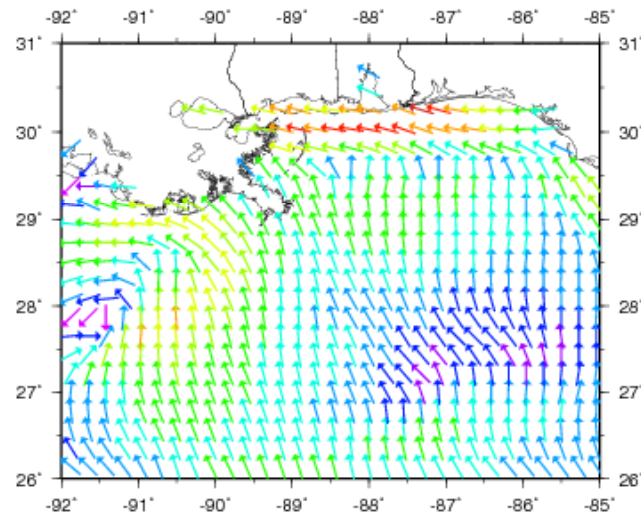
**6/25/10**

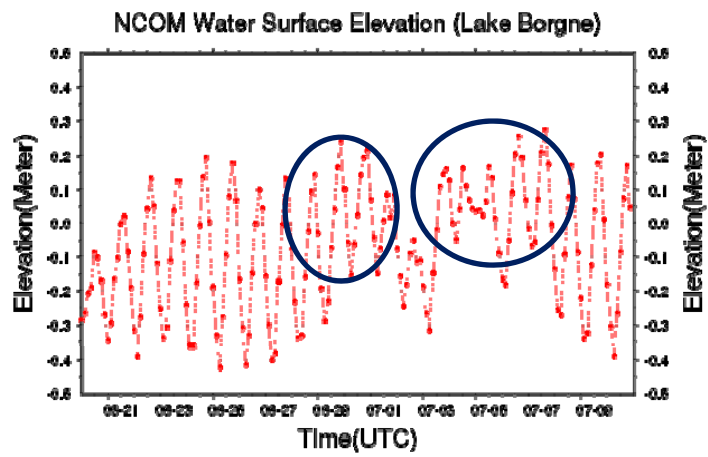
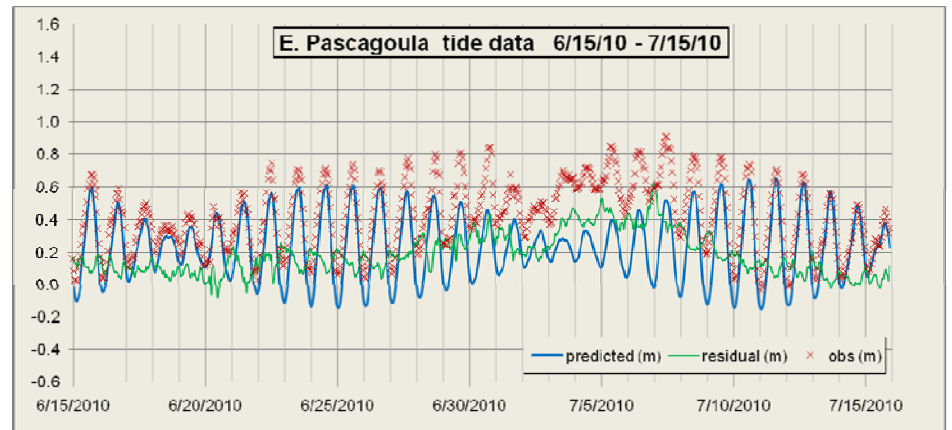
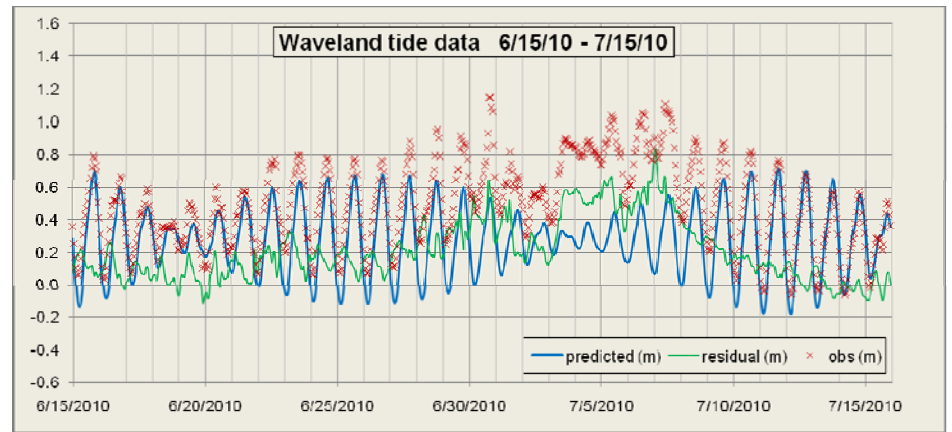
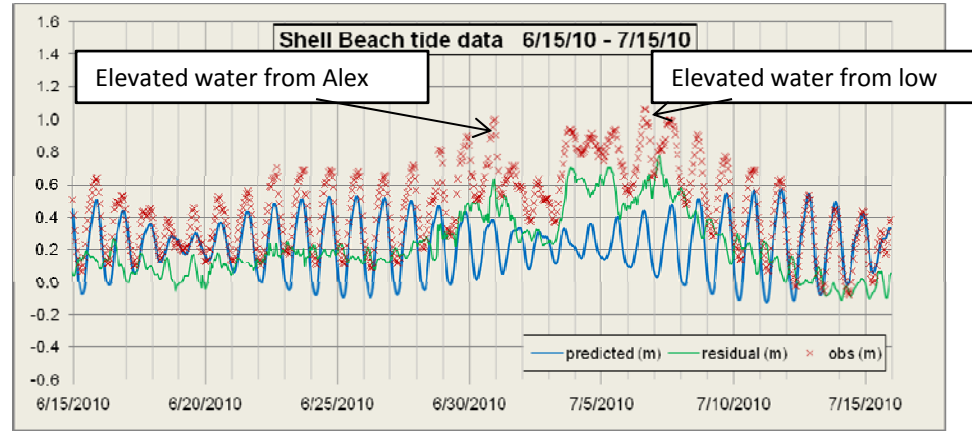
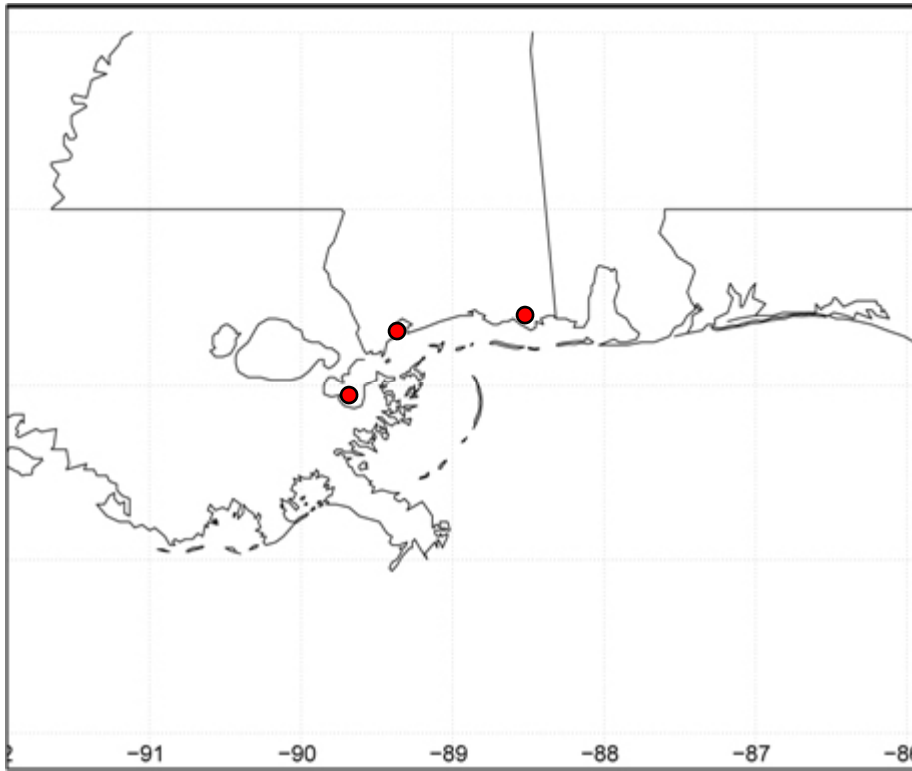


**6/30/10**

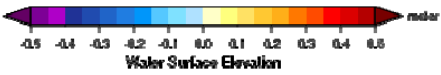
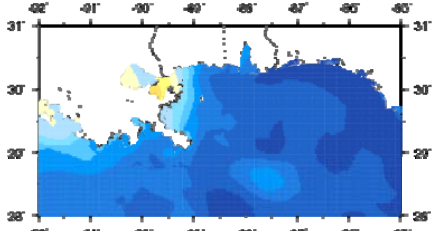


**7/5/10**

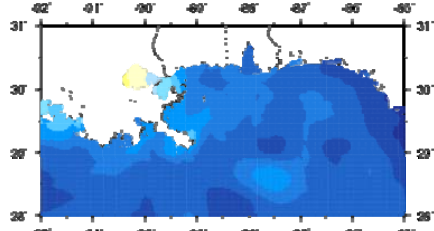




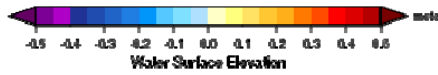
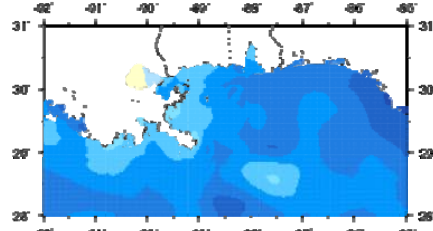
NCOM AMSEAS Water Sfc Elev 20100630 t00



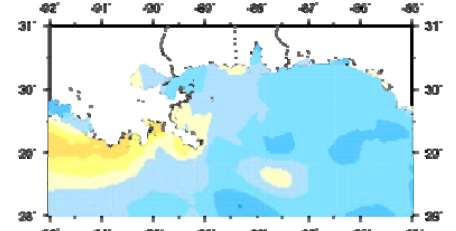
NCOM AMSEAS Water Sfc Elev 20100630 t03



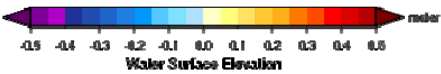
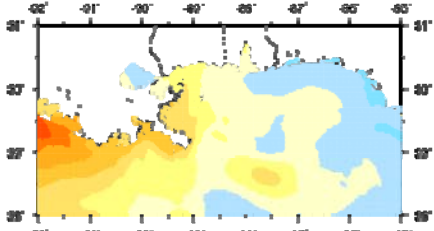
NCOM AMSEAS Water Sfc Elev 20100630 t06



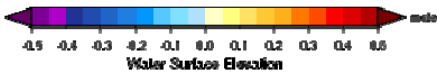
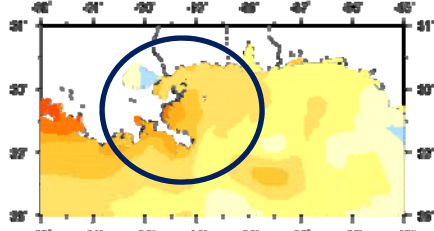
NCOM AMSEAS Water Sfc Elev 20100630 t09



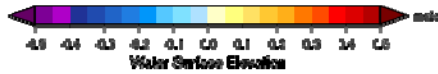
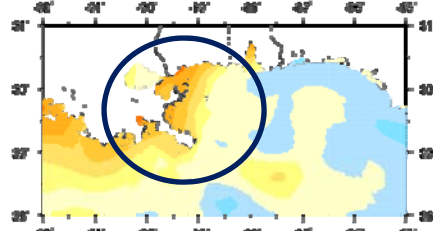
NCOM AMSEAS Water Sfc Elev 20100630 t12



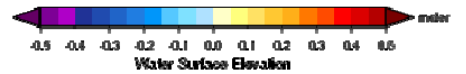
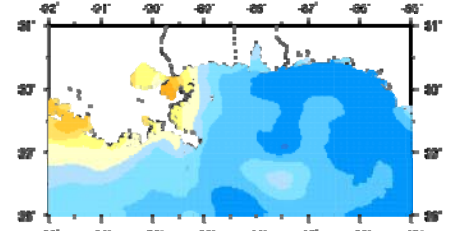
NCOM AMSEAS Water Sfc Elev 20100630 t16



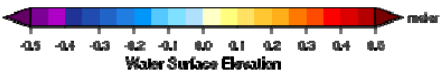
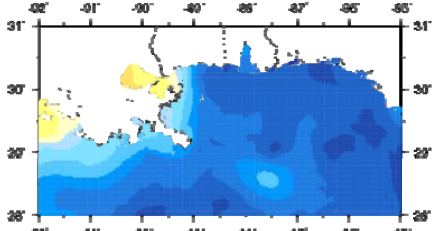
NCOM AMSEAS Water Sfc Elev 20100630 t18



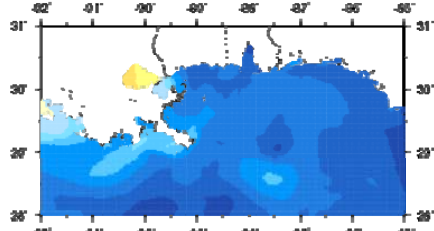
NCOM AMSEAS Water Sfc Elev 20100630 t21



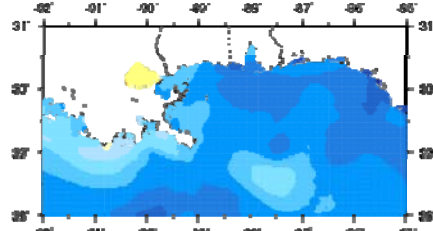
NCOM AMSEAS Water Sfc Elev 20100701 t00



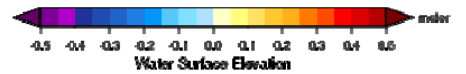
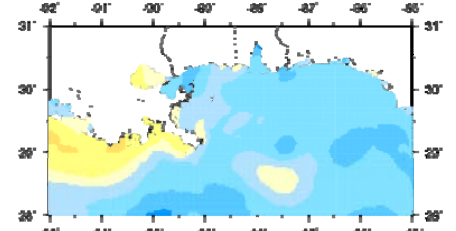
NCOM AMSEAS Water Sfc Elev 20100701 t03



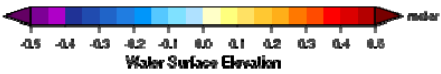
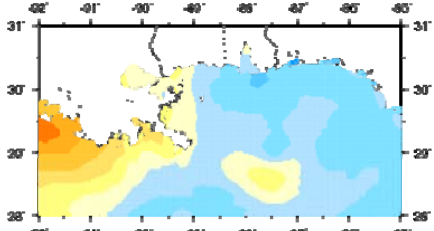
NCOM AMSEAS Water Sfc Elev 20100701 t06



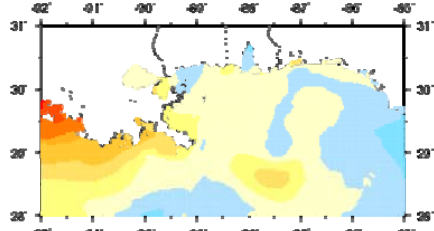
NCOM AMSEAS Water Sfc Elev 20100701 t09



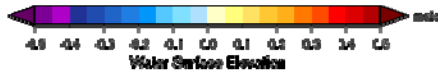
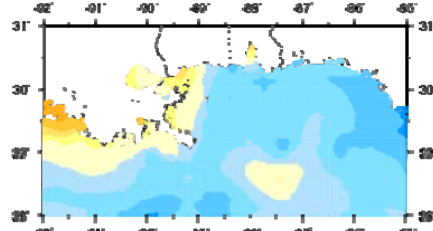
NCOM AMSEAS Water Sfc Elev 20100701 t12



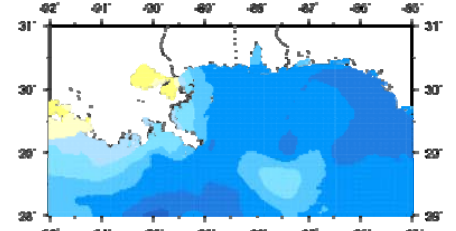
NCOM AMSEAS Water Sfc Elev 20100701 t15



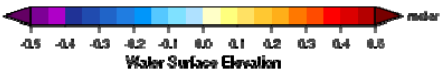
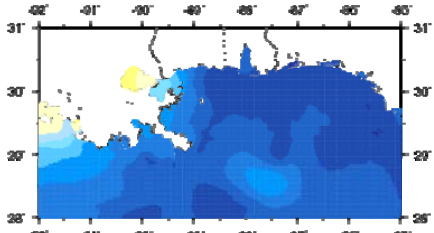
NCOM AMSEAS Water Sfc Elev 20100701 t18



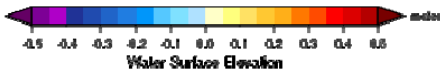
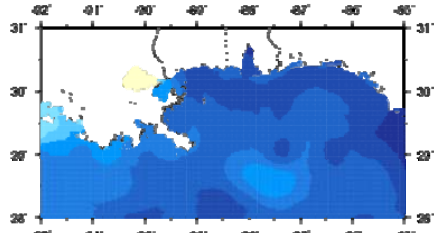
NCOM AMSEAS Water Sfc Elev 20100701 t21



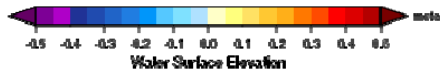
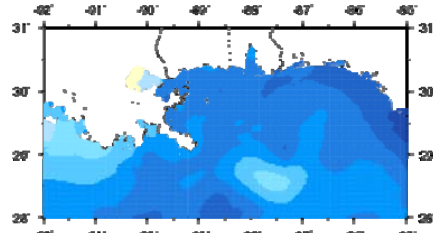
NCOM AMSEAS Water Sfc Elev 20100702 100



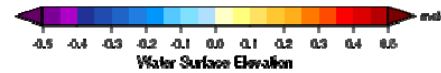
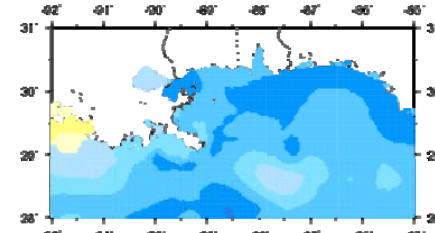
NCOM AMSEAS Water Sfc Elev 20100702 103



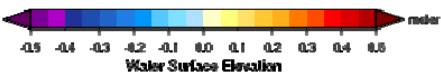
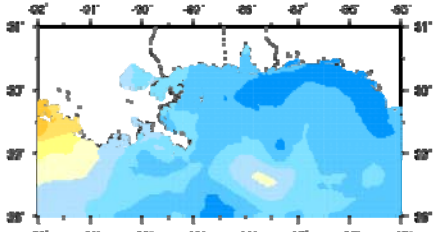
NCOM AMSEAS Water Sfc Elev 20100702 106



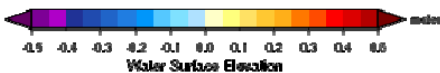
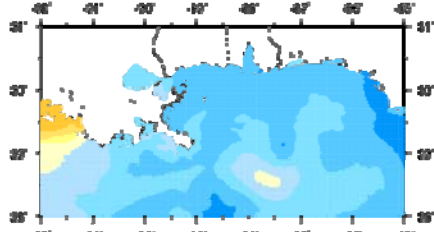
NCOM AMSEAS Water Sfc Elev 20100702 109



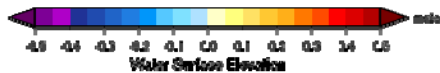
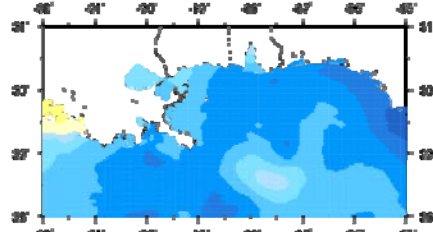
NCOM AMSEAS Water Sfc Elev 20100702 112



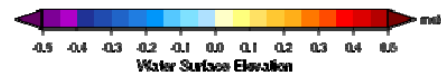
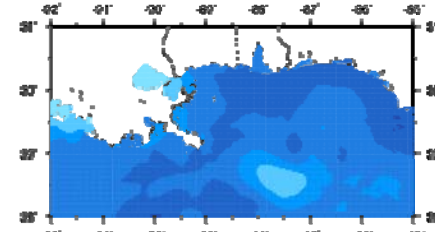
NCOM AMSEAS Water Sfc Elev 20100702 116



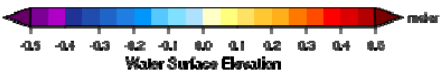
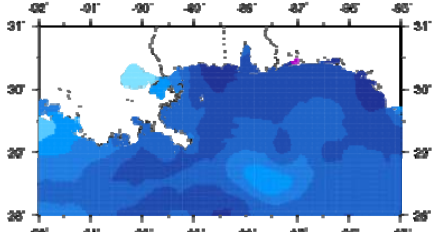
NCOM AMSEAS Water Sfc Elev 20100702 118



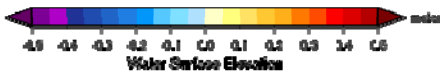
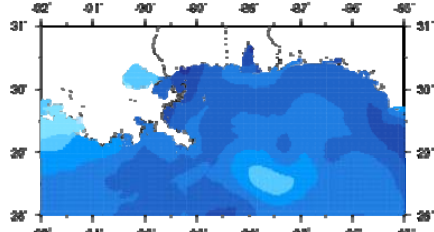
NCOM AMSEAS Water Sfc Elev 20100702 121



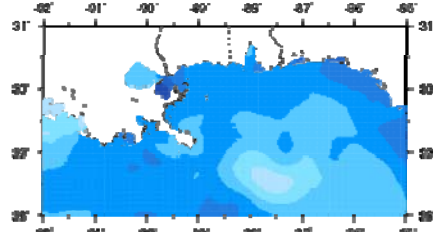
NCOM AMSEAS Water Sfc Elev 20100703 100



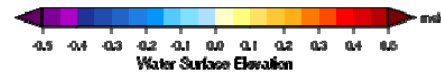
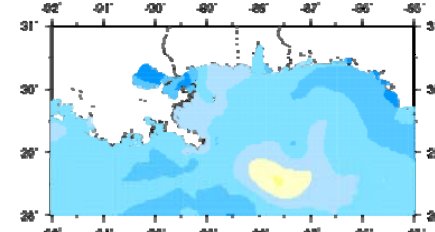
NCOM AMSEAS Water Sfc Elev 20100703 103



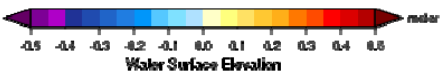
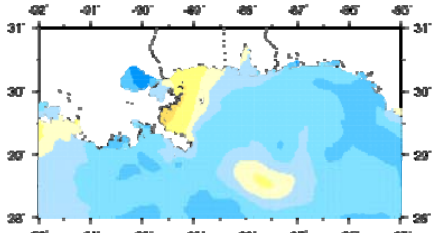
NCOM AMSEAS Water Sfc Elev 20100703 106



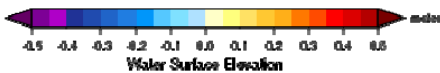
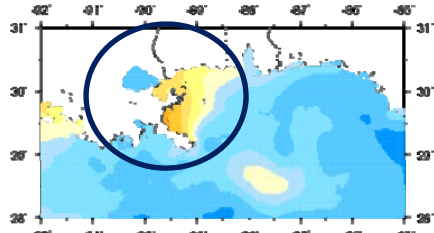
NCOM AMSEAS Water Sfc Elev 20100703 109



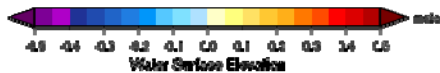
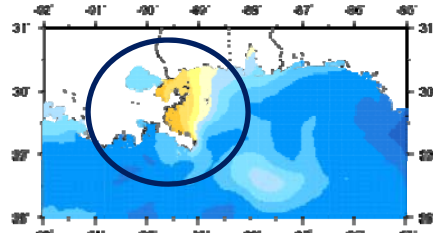
NCOM AMSEAS Water Sfc Elev 20100703 112



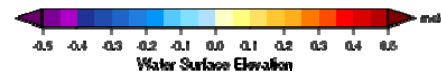
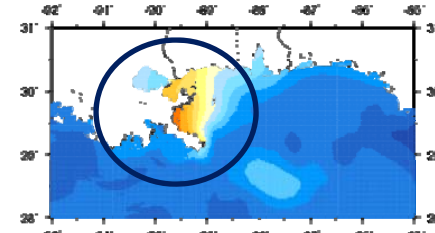
NCOM AMSEAS Water Sfc Elev 20100703 115



NCOM AMSEAS Water Sfc Elev 20100703 118

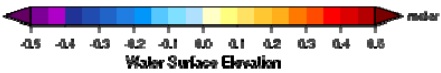
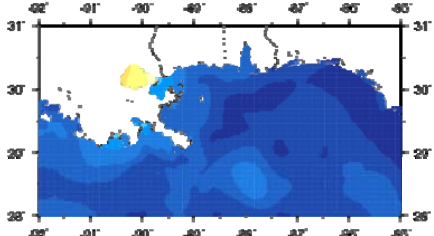


NCOM AMSEAS Water Sfc Elev 20100703 121

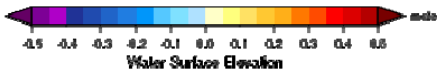
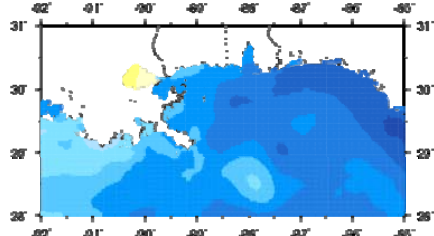




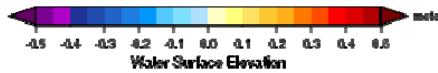
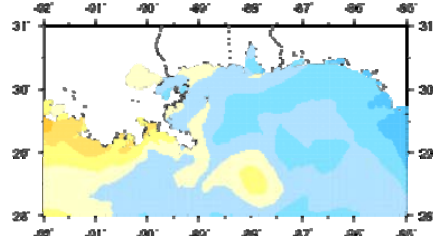
NCOM AMSEAS Water Sfc Elev 20100706 t00



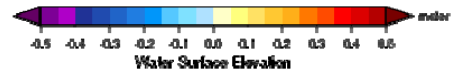
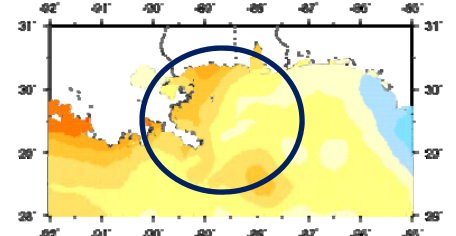
NCOM AMSEAS Water Sfc Elev 20100706 t03



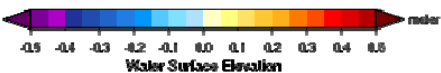
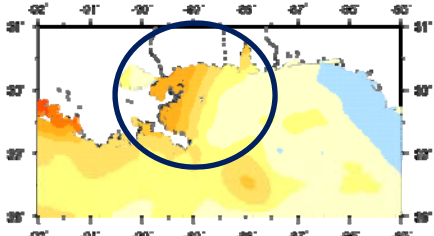
NCOM AMSEAS Water Sfc Elev 20100706 t06



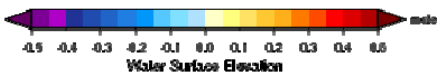
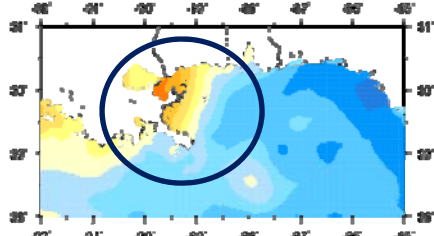
NCOM AMSEAS Water Sfc Elev 20100706 t09



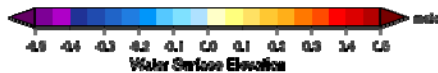
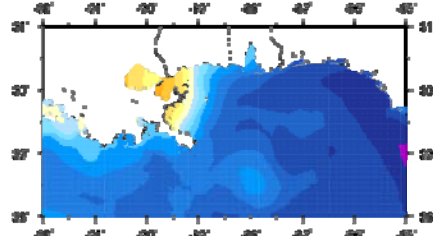
NCOM AMSEAS Water Sfc Elev 20100706 t12



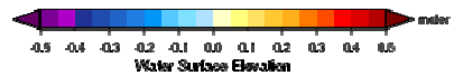
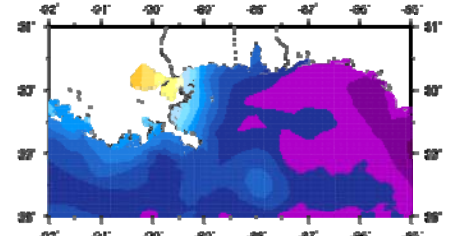
NCOM AMSEAS Water Sfc Elev 20100706 t16



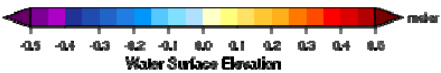
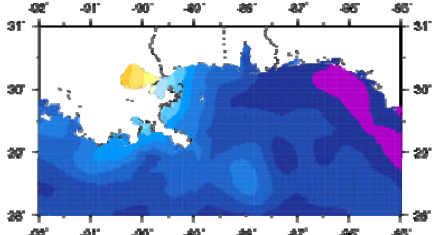
NCOM AMSEAS Water Sfc Elev 20100706 t18



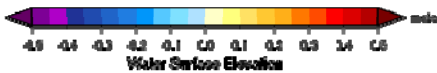
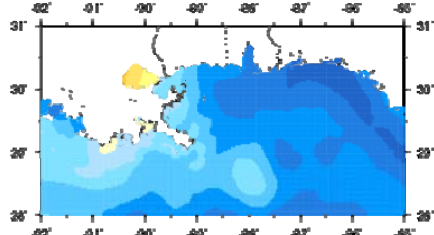
NCOM AMSEAS Water Sfc Elev 20100706 t21



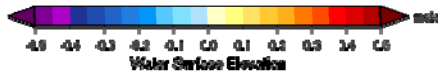
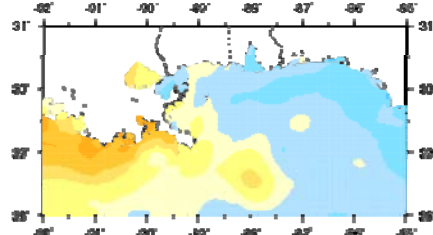
NCOM AMSEAS Water Sfc Elev 20100707 t00



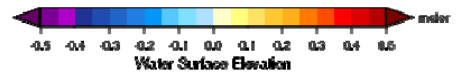
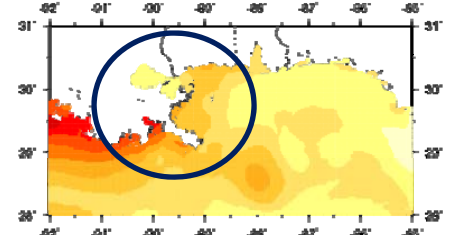
NCOM AMSEAS Water Sfc Elev 20100707 t03



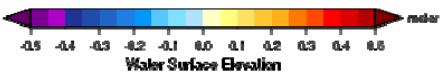
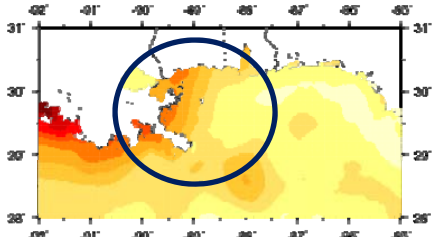
NCOM AMSEAS Water Sfc Elev 20100707 t06



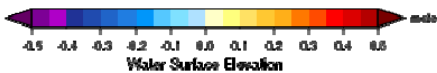
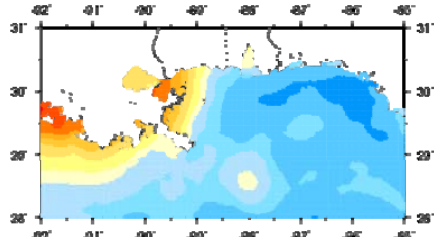
NCOM AMSEAS Water Sfc Elev 20100707 t09



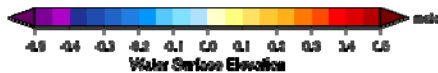
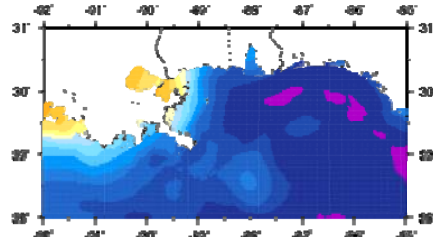
NCOM AMSEAS Water Sfc Elev 20100707 t12



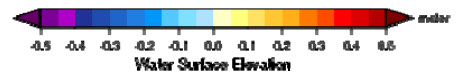
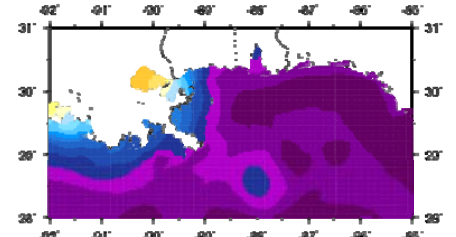
NCOM AMSEAS Water Sfc Elev 20100707 t15



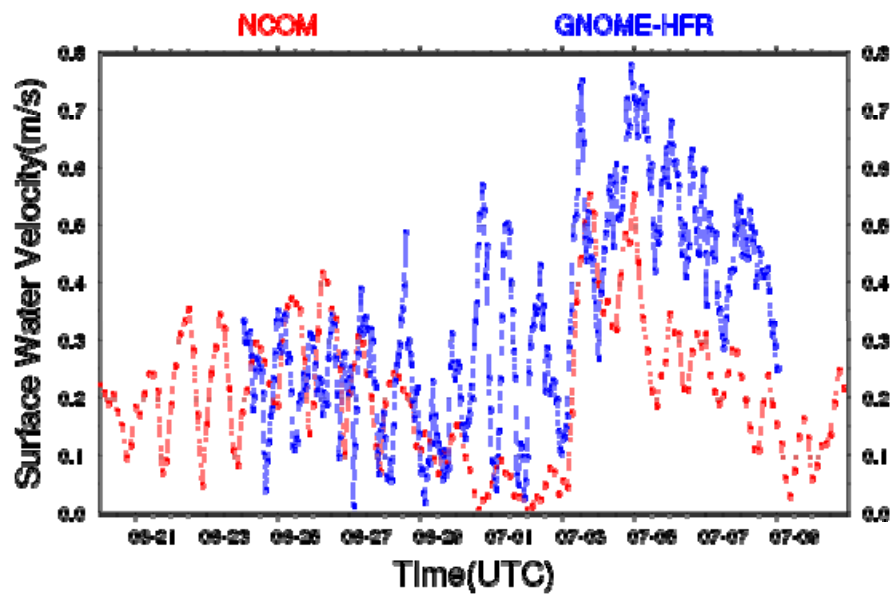
NCOM AMSEAS Water Sfc Elev 20100707 t18



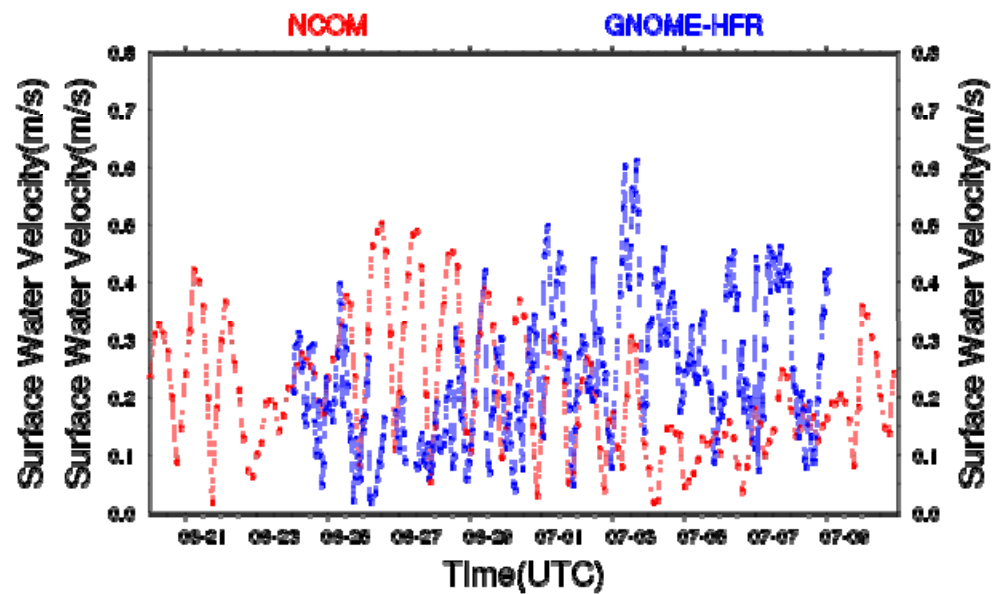
NCOM AMSEAS Water Sfc Elev 20100707 t21



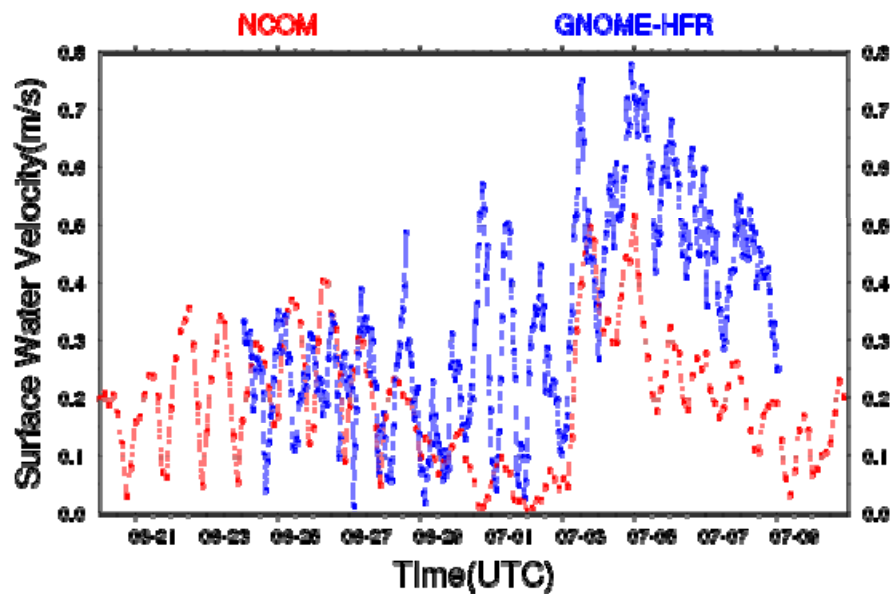
NCOM(0m) vs GNOME-HFR at -88.006561\_30.002024



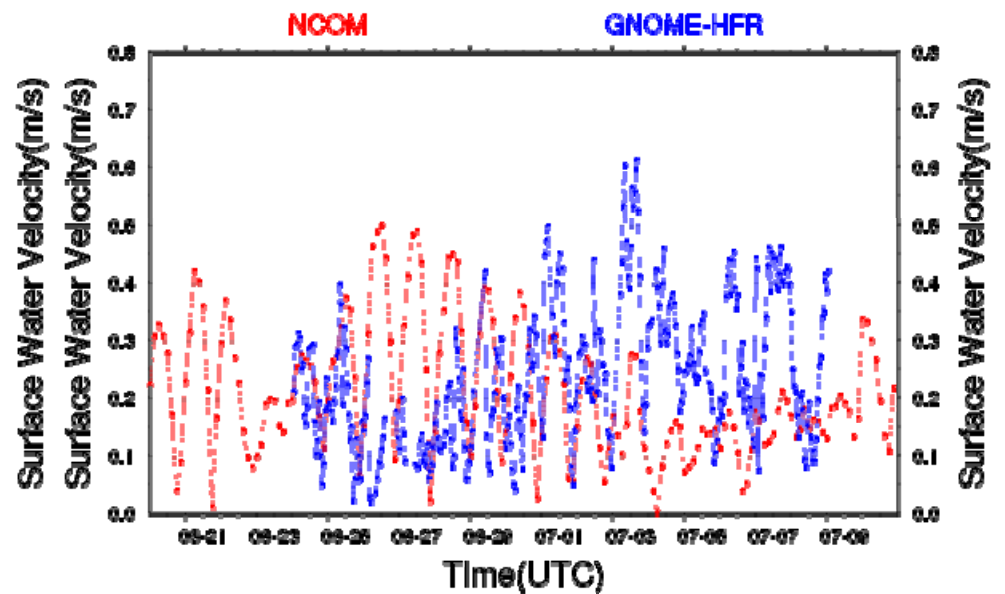
NCOM(0m) vs GNOME-HFR at -86.497589\_30.002024



NCOM(2m) vs GNOME-HFR at -88.006561\_30.002024



NCOM(2m) vs GNOME-HFR at -86.497589\_30.002024





## Summary

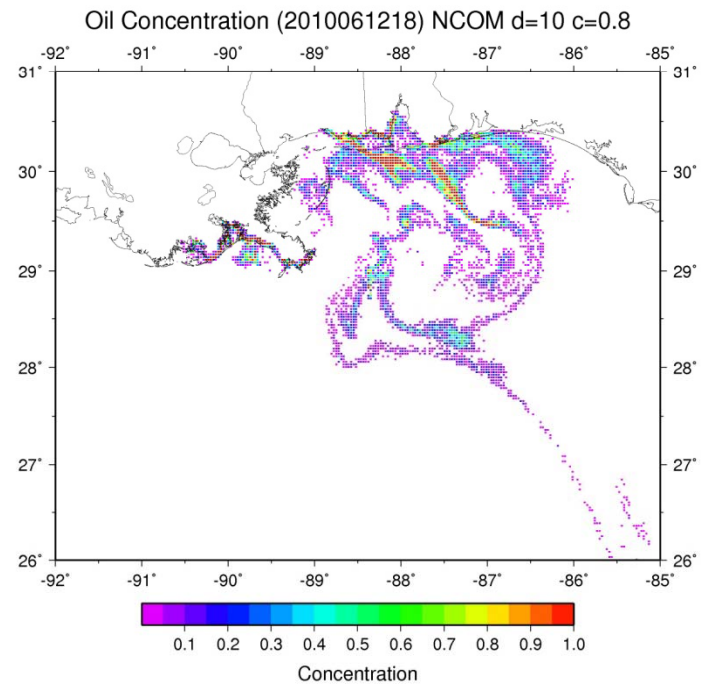
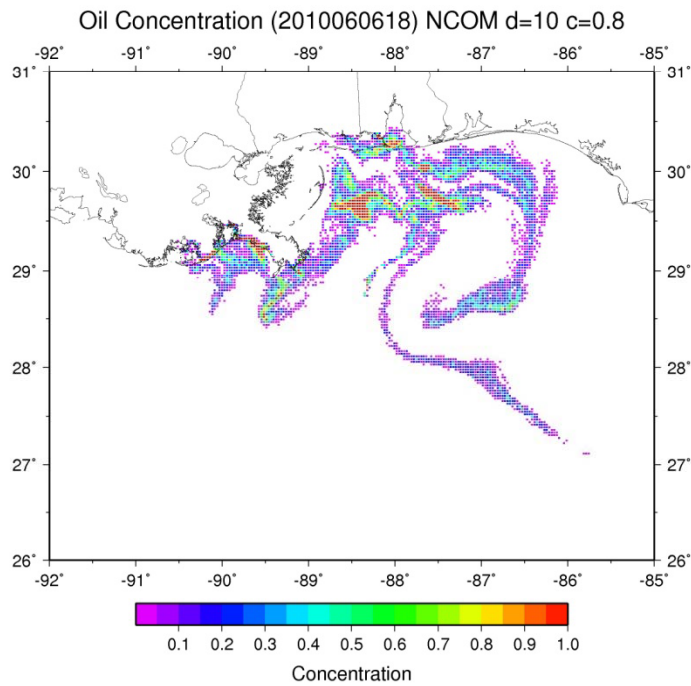
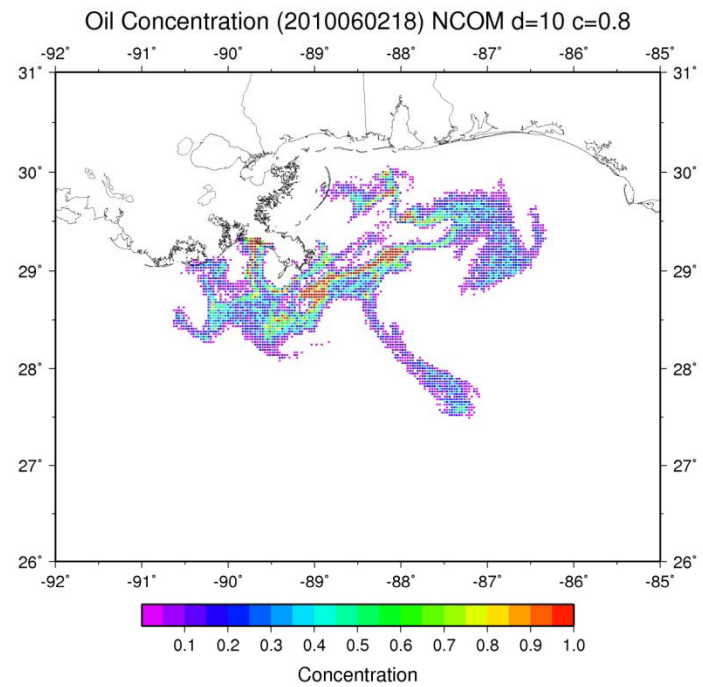
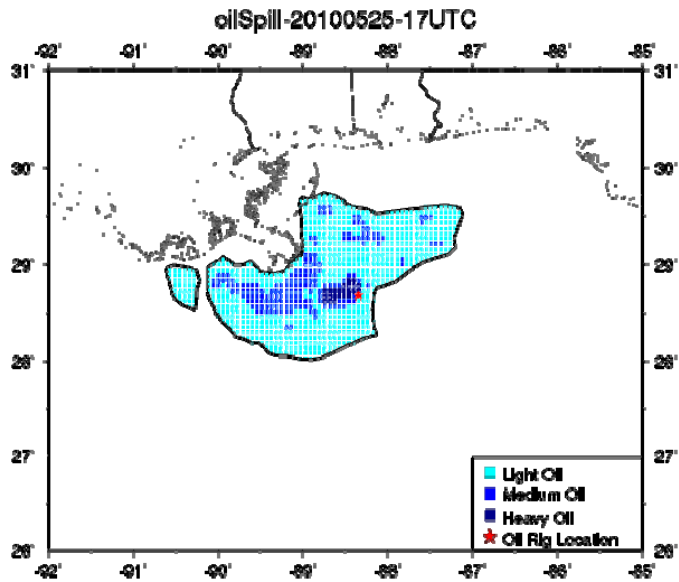
- Oil transport mostly governed by ocean currents
- However, surge events associated with tropical cyclones and non-tropical lows can push oil far into the marsh system
- Difficult to know if a hurricane landfall would have been catastrophic
  - Hurricane tend to flush the ecosystem of pollutants
  - But the potential of inland pollution existed. Our ADCIRC simulations (not shown) suggested deep movement of oil into the marsh system
  - Fortunately, no hurricane landfall occurred.

# Merging of Oil Datasets

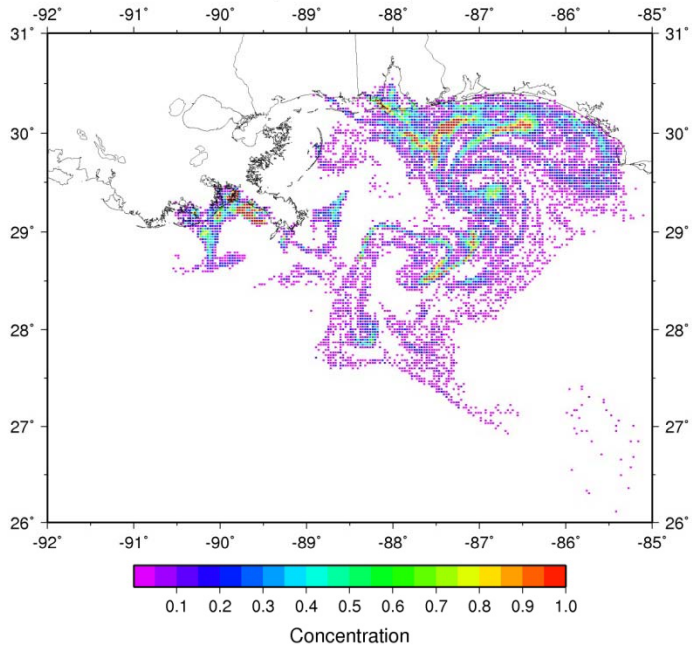
- Shoreline Cleanup and Assessment Technique (SCAT) datasets
- State DEQs
- Louisiana Bucket Brigade
- Lake Pontchartrain Basin Foundation
- Investigating other potential datasets

Original purpose is to provide validation against the oil spill model after dispersion, emulsification, and evaporation/dissolution terms are added.

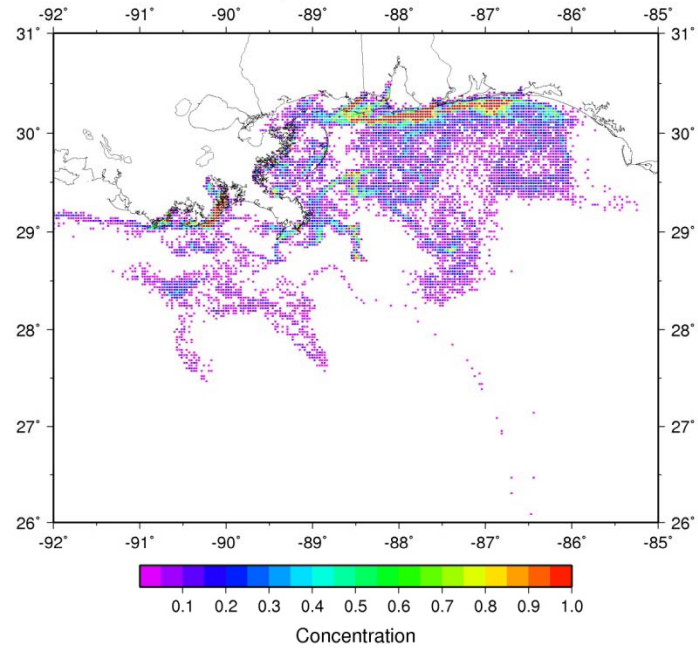
However, it should be beneficial for other DWH research endeavors.



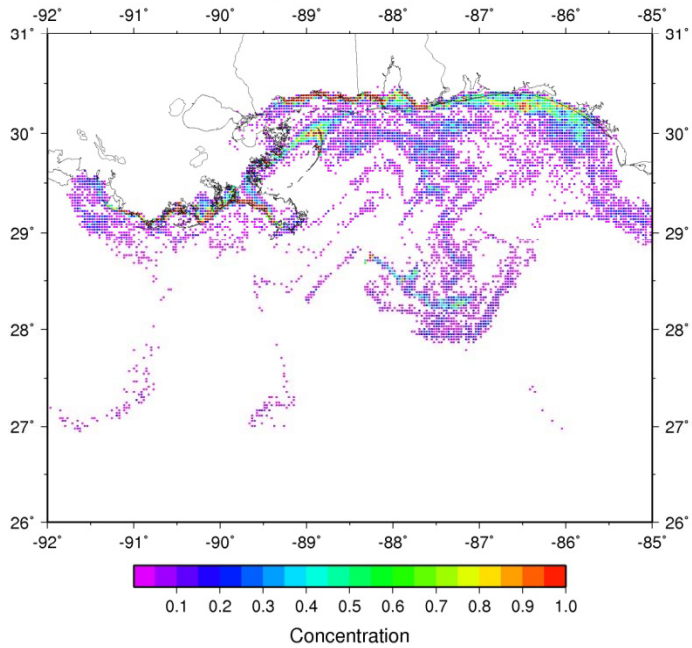
Oil Concentration (2010062118) NCOM d=10 c=0.8



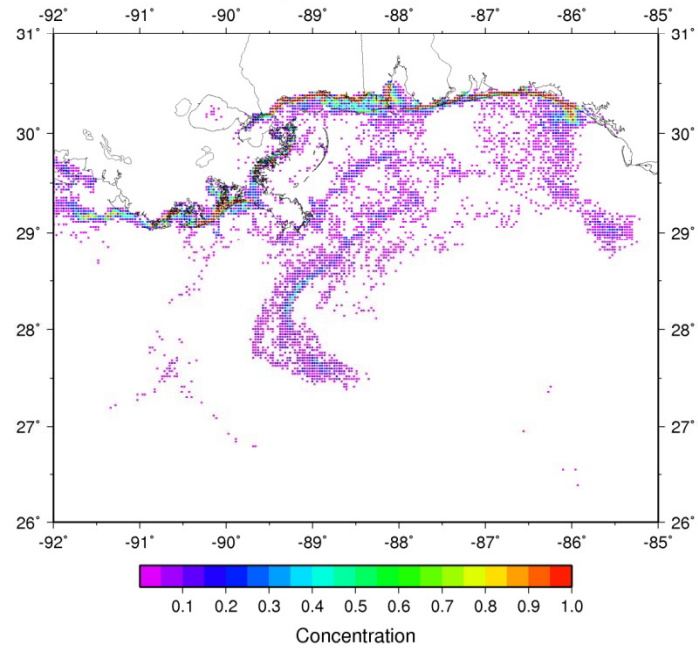
Oil Concentration (2010070318) NCOM d=10 c=0.8



Oil Concentration (2010071418) NCOM d=10 c=0.8



Oil Concentration (2010072618) NCOM d=10 c=0.8



# SCAT data

- The SCAT teams performed survey of affected shorelines and collected data on shoreline oiling conditions
- MS-AL SCAT data very coarse and only a few days. Not useful
- LA SCAT data covers most of the oil spill and ample datapoints
  - Spreadsheet available and contains metadata
  - However, many temporal data “holes” exist in different regions. This problem is common for all the datasets, and is the motivation for compositing all the datasets

- 20100524
- 20100523
- 20100522
- 20100521
- 20100520
- 20100519
- oil\_order
- No Observed Oil
- Negligible Tarballs
- Light Tarballs
- Moderate Tarballs
- Heavy Tarballs
- Very Light Oiling
- Light Oiling
- Moderate Oiling
- Heavy Oiling
- 20100518
- 20100517
- 20100515
- 20100514
- 20100513
- 20100512
- 20100511
- 20100510
- 20100509
- 20100508
- Cumulative\_SCAT\_LA



- 20100524
- 20100523
- 20100522
  - oil\_order
  - No Observed Oil
  - Negligible Tarballs
  - Light Tarballs
  - Moderate Tarballs
  - Heavy Tarballs
  - Very Light Oiling
  - Light Oiling
  - Moderate Oiling
  - Heavy Oiling
- 20100521
- 20100520
- 20100519
- 20100518
- 20100517
- 20100515
- 20100514
- 20100513
- 20100512
- 20100511
- 20100510
- 20100509
- 20100508
- Cumulative\_SCAT\_LA



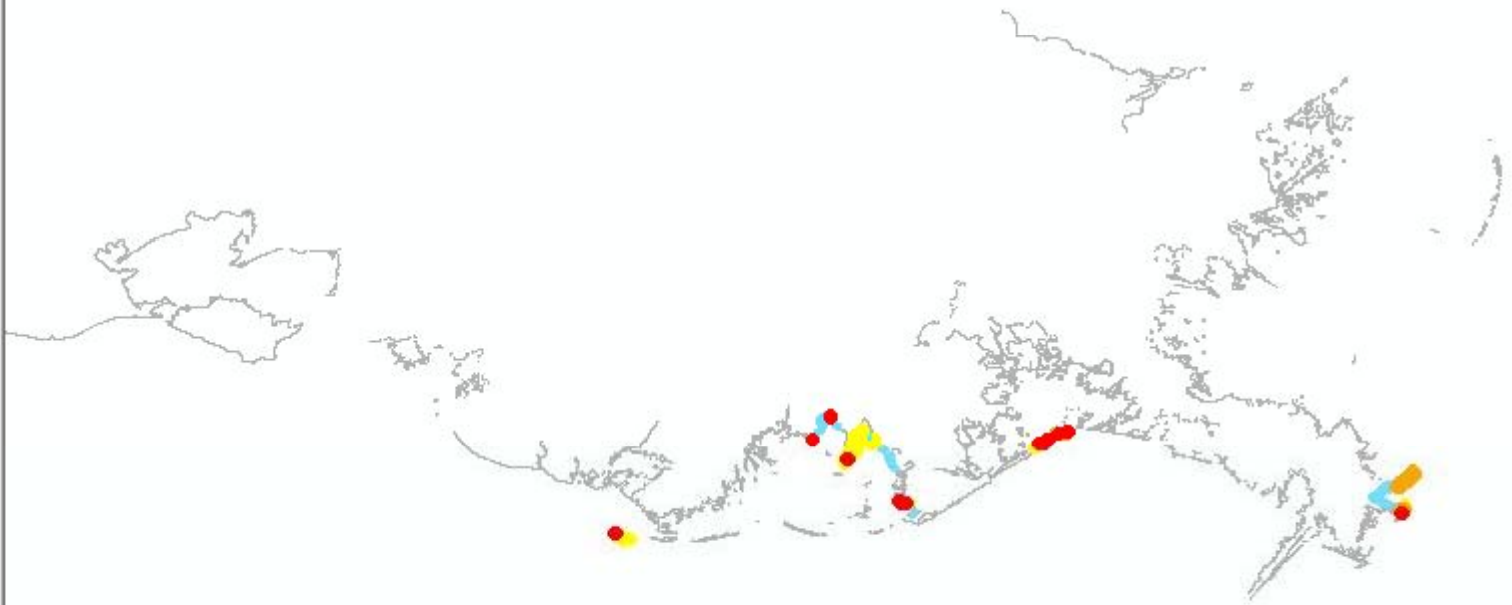
**Layers**

- 20100531
- 20100530
- 20100529
- 20100528
- 20100527
- 20100526
- 20100525

oil\_order

- No Observed Oil
- Negligible Tarballs
- Light Tarballs
- Moderate Tarballs
- Heavy Tarballs
- Very Light Oiling
- Light Oiling
- Moderate Oiling
- Heavy Oiling

- 20100524
- 20100523
- 20100522
- 20100521
- 20100520
- 20100519
- 20100518
- 20100517
- 20100515
- 20100514
- 20100513
- 20100512





**Layers**

- 20100531
- 20100530
- 20100529
- 20100528

oil\_order

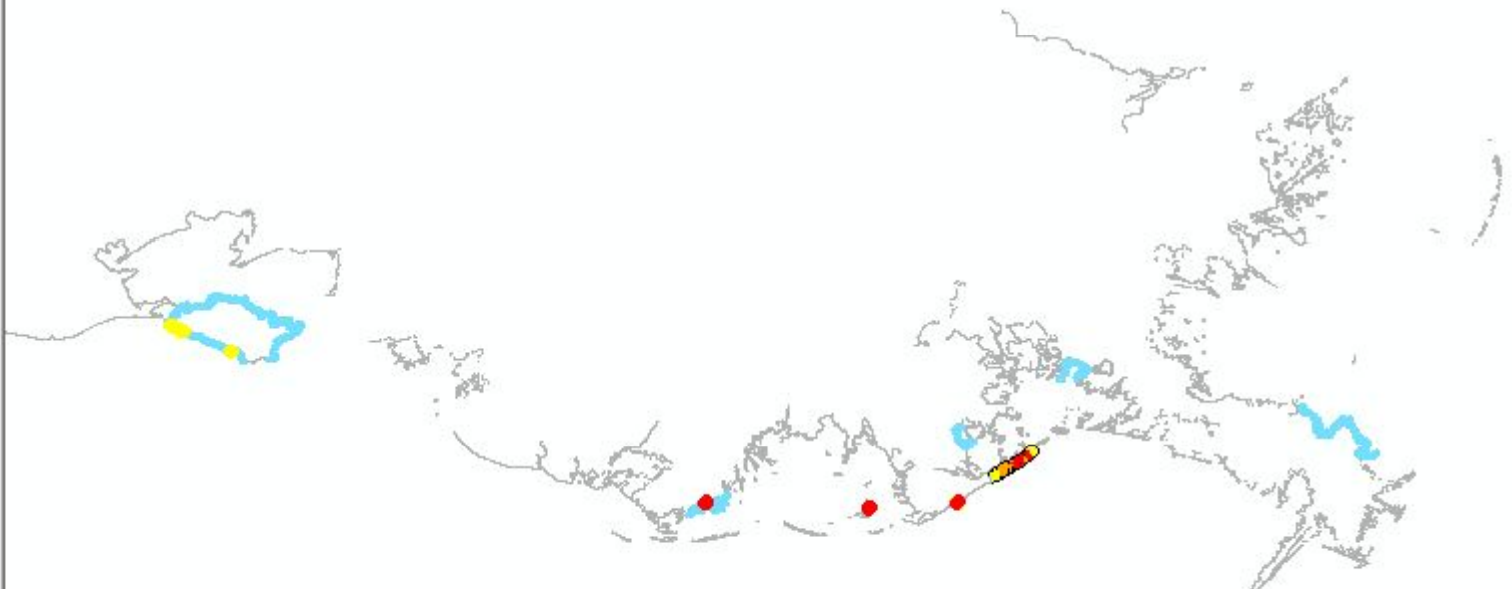
- No Observed Oil
- Negligible Tarballs
- Light Tarballs
- Moderate Tarballs
- Heavy Tarballs
- Very Light Oiling
- Light Oiling
- Moderate Oiling
- Heavy Oiling

- 20100527
- 20100526
- 20100525
- 20100524
- 20100523
- 20100522
- 20100521
- 20100520
- 20100519
- 20100518
- 20100517
- 20100515
- 20100514
- 20100513
- 20100512

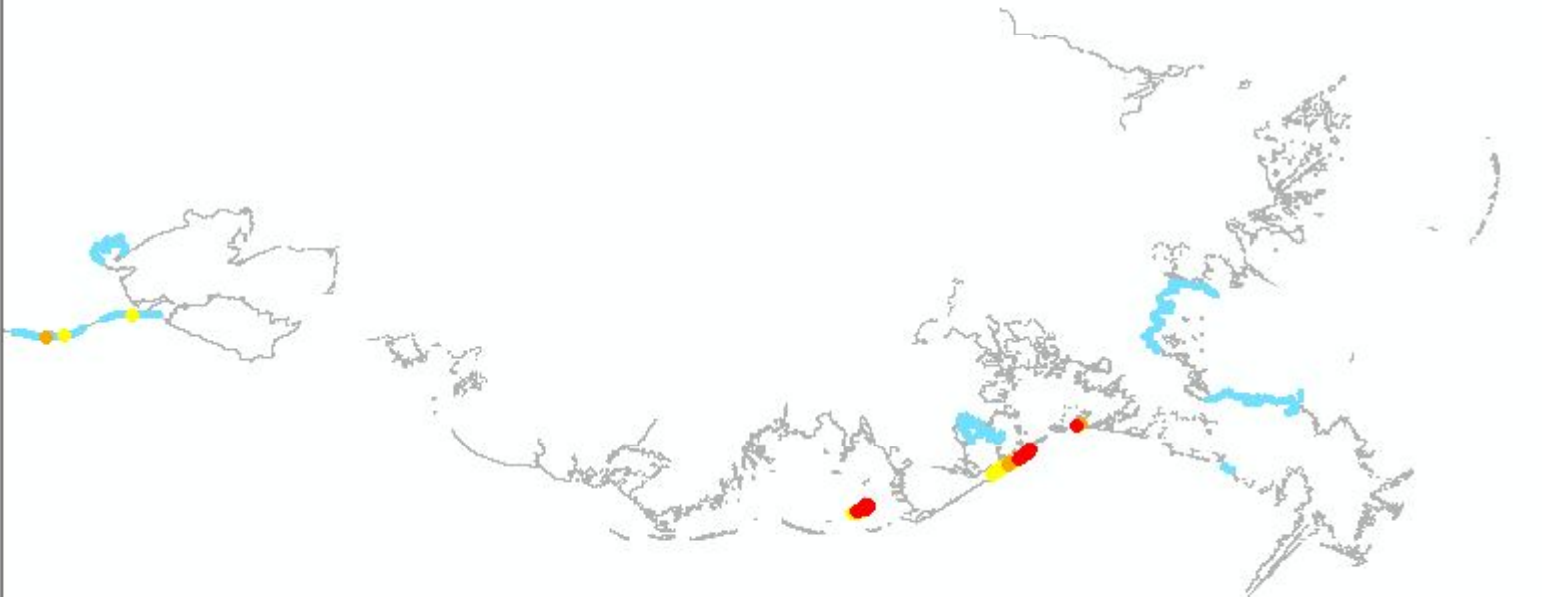


**Layers**

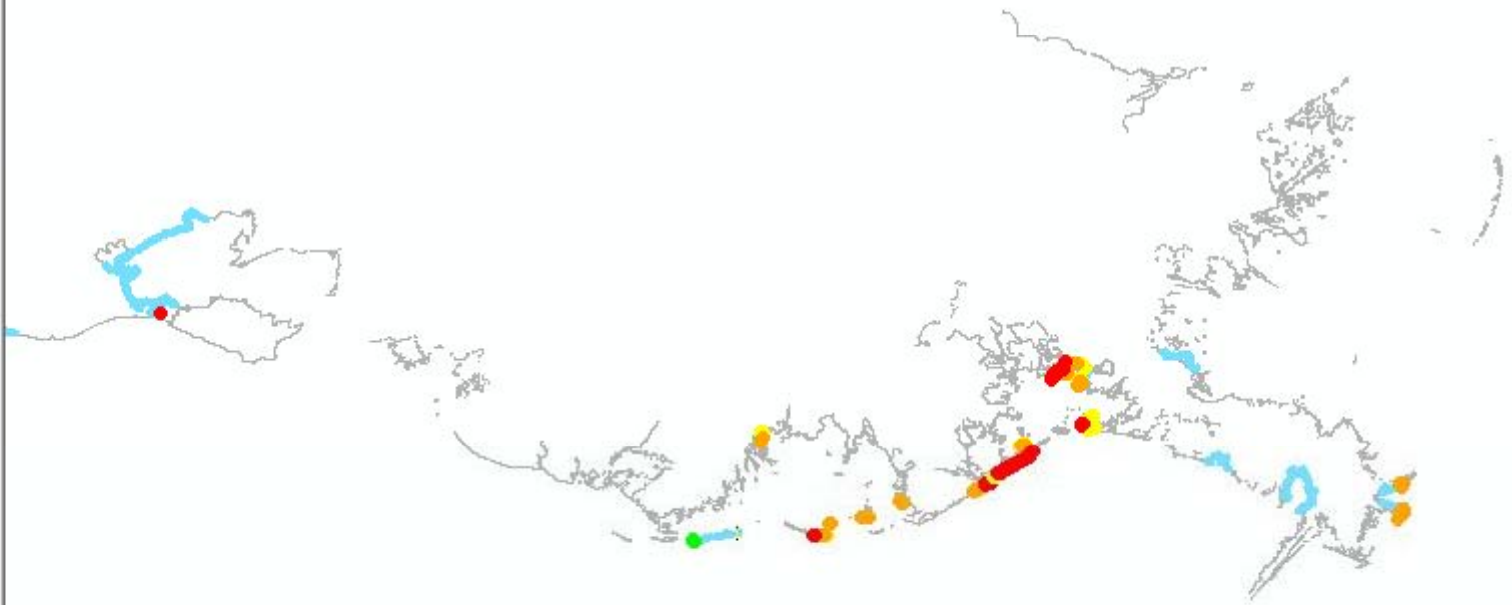
- 20100531
  - oil\_order
    - No Observed Oil
    - Negligible Tarballs
    - Light Tarballs
    - Moderate Tarballs
    - Heavy Tarballs
    - Very Light Oiling
    - Light Oiling
    - Moderate Oiling
    - Heavy Oiling
- 20100530
- 20100529
- 20100528
- 20100527
- 20100526
- 20100525
- 20100524
- 20100523
- 20100522
- 20100521
- 20100520
- 20100519
- 20100518
- 20100517
- 20100515
- 20100514
- 20100513
- 20100512



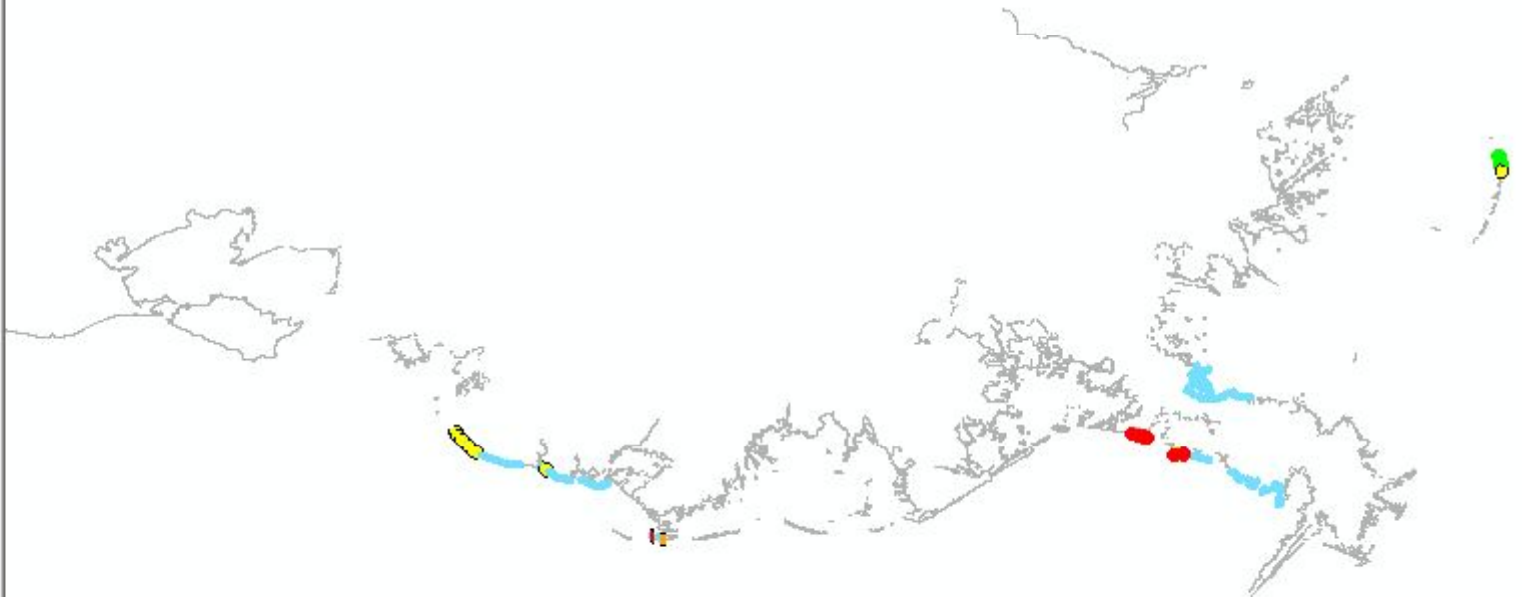
- 20100617
- 20100616
- 20100615
- 20100614
- 20100613
- 20100612
- 20100611
- 20100610
- 20100609
- 20100608
- 20100607
- 20100606
- 20100605
- 20100604
- 20100603
- oil\_order
- No Observed Oil
- Negligible Tarballs
- Light Tarballs
- Moderate Tarballs
- Heavy Tarballs
- Very Light Oiling
- Light Oiling
- Moderate Oiling
- Heavy Oiling
- 20100601
- Cumulative\_SCAT\_LA



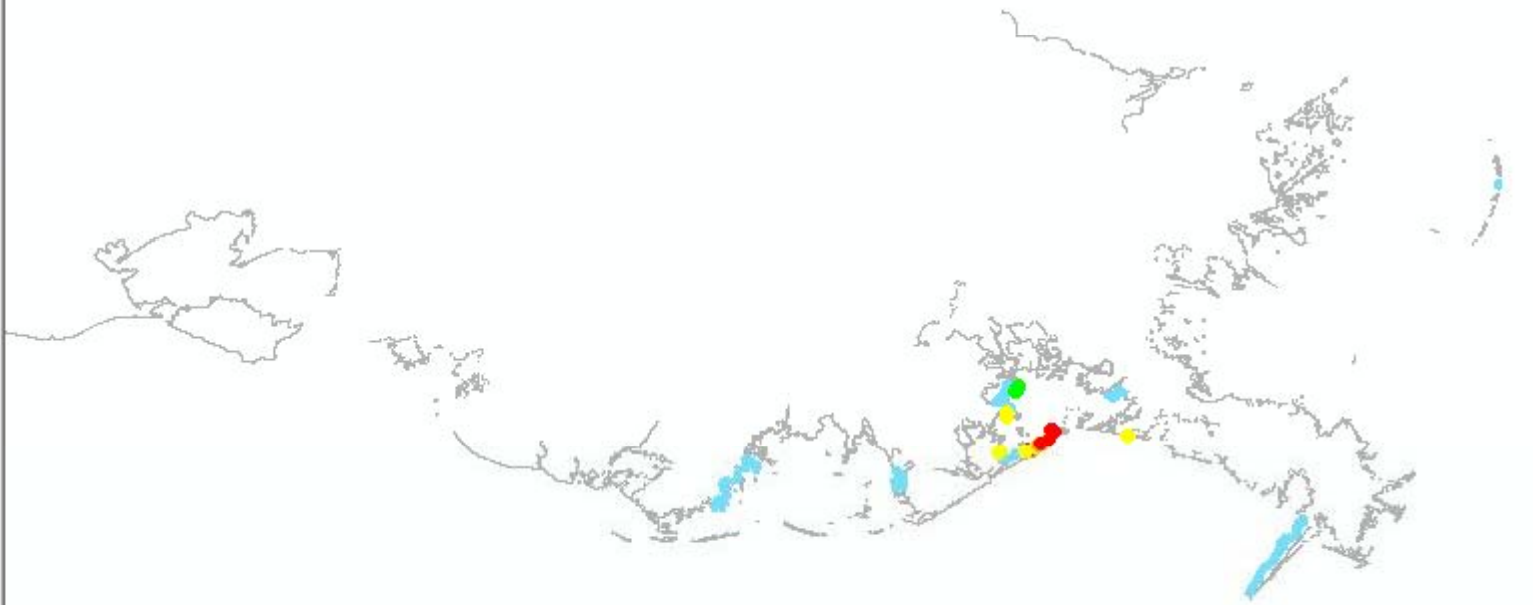
- 20100617
- 20100616
- 20100615
- 20100614
- 20100613
- 20100612
- 20100611
- 20100610
- 20100609
- 20100608
- 20100607
- 20100606
- oil\_order
- No Observed Oil
- Negligible Tarballs
- Light Tarballs
- Moderate Tarballs
- Heavy Tarballs
- Very Light Oiling
- Light Oiling
- Moderate Oiling
- Heavy Oiling
- 20100605
- 20100604
- 20100603
- 20100601
- Cumulative\_SCAT\_LA



- 20100617
- 20100616
- 20100615
- 20100614
- 20100613
- 20100612
- 20100611
- 20100610
- 20100609
- oil\_order
- No Observed Oil
- Negligible Tarballs
- Light Tarballs
- Moderate Tarballs
- Heavy Tarballs
- Very Light Oiling
- Light Oiling
- Moderate Oiling
- Heavy Oiling
- 20100608
- 20100607
- 20100606
- 20100605
- 20100604
- 20100603
- 20100601
- Cumulative\_SCAT\_LA



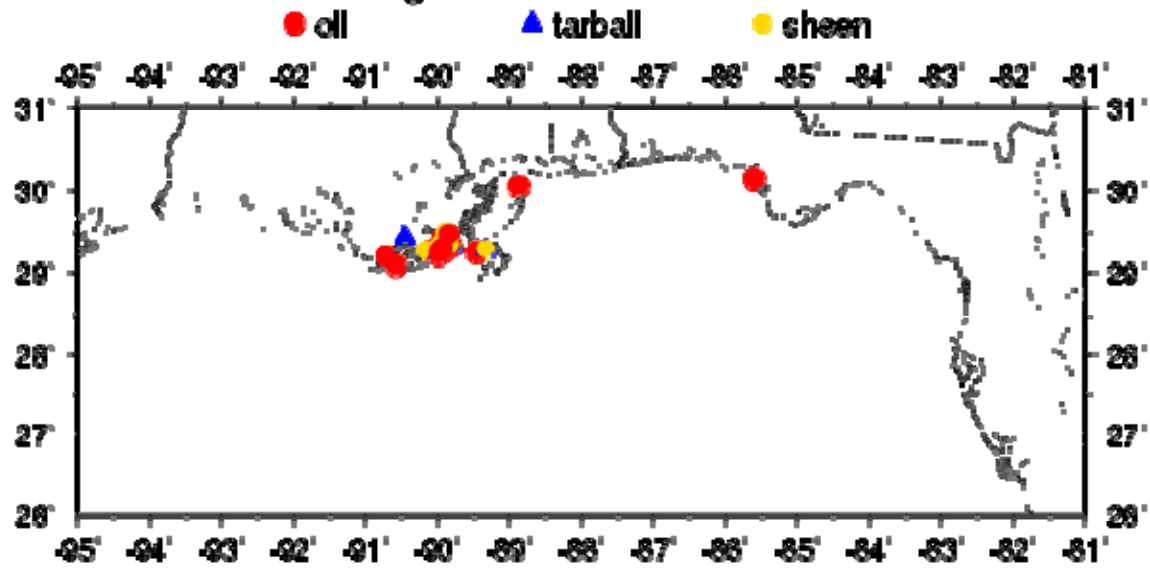
- 20100617
- 20100616
- 20100615
- 20100614
- 20100613
- 20100612
- oil\_order
- No Observed Oil
- Negligible Tarballs
- Light Tarballs
- Moderate Tarballs
- Heavy Tarballs
- Very Light Oiling
- Light Oiling
- Moderate Oiling
- Heavy Oiling
- 20100611
- 20100610
- 20100609
- 20100608
- 20100607
- 20100606
- 20100605
- 20100604
- 20100603
- 20100601
- Cumulative\_SCAT\_LA



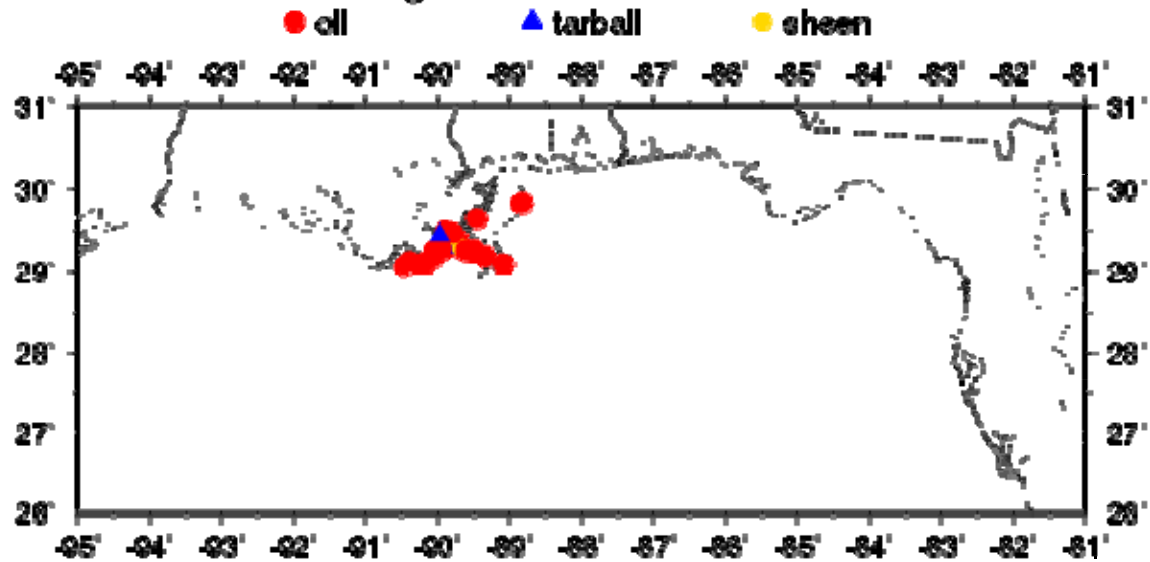
# Louisiana Bucket Brigade data

- Volunteer organization which tabulated all oil spill news and information from the media, phone calls, emails, etc.
- Available in a spreadsheet
- Covers the entire oil spill and plentiful datapoints
  - Temporal data holes
  - Dataset also contained news accounts, community meetings, tidbits such as “smells from oil burning.” These have been removed
  - Latitude and longitude not always included, just a specific location. We have added an estimated latitude and longitude if possible

### Louisiana Bucket Brigade - Oil & Tarball 20100618-20100620



### Louisiana Bucket Brigade - Oil & Tarball 20100621-20100623

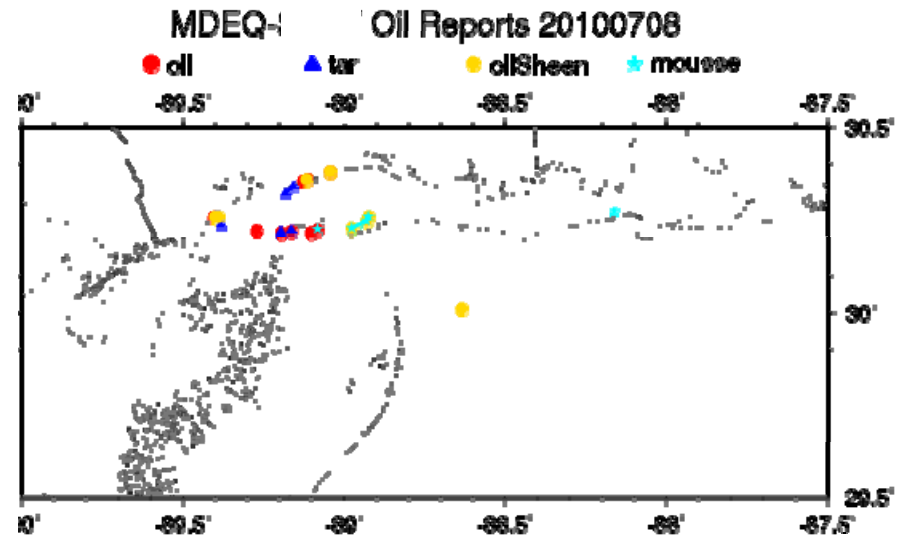
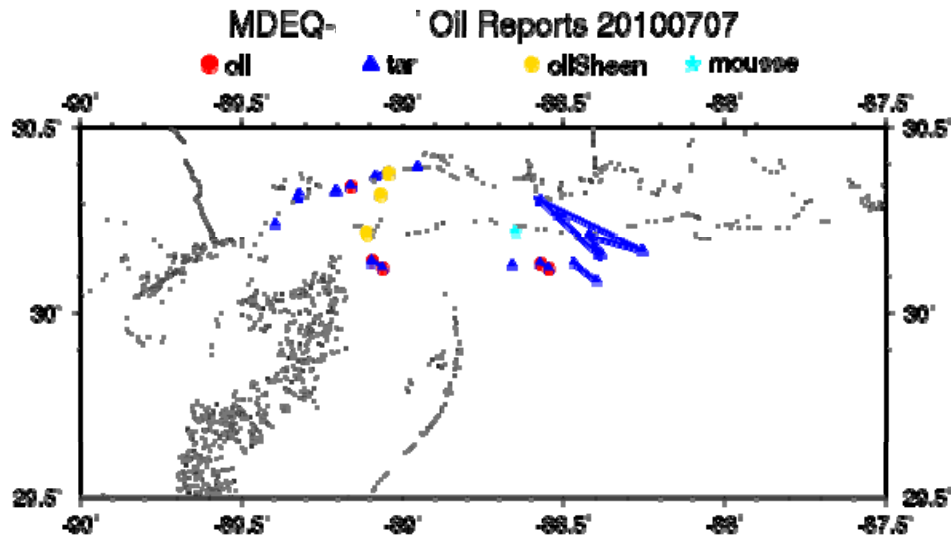
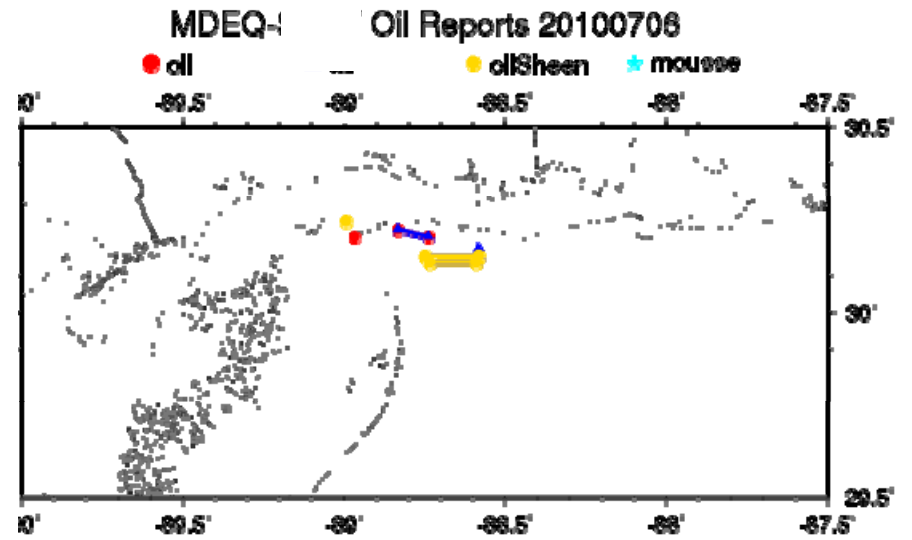
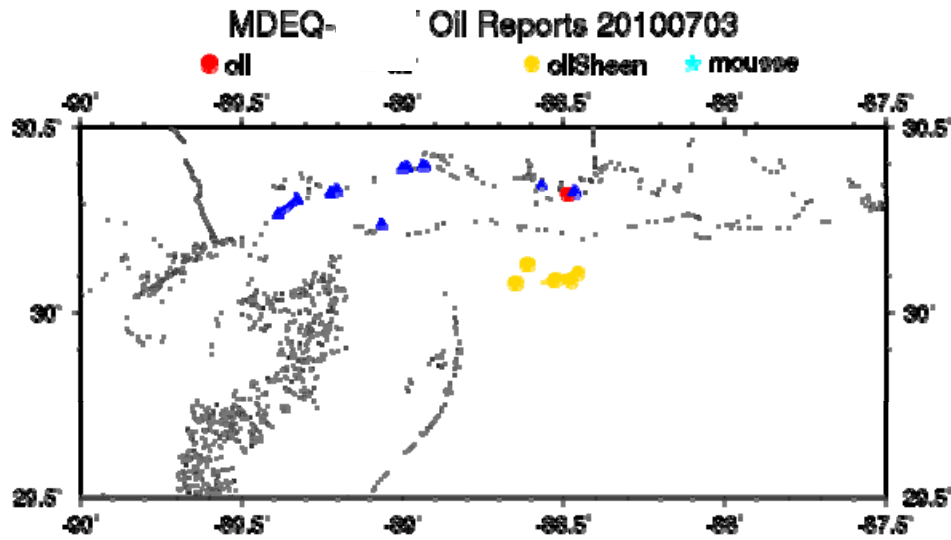




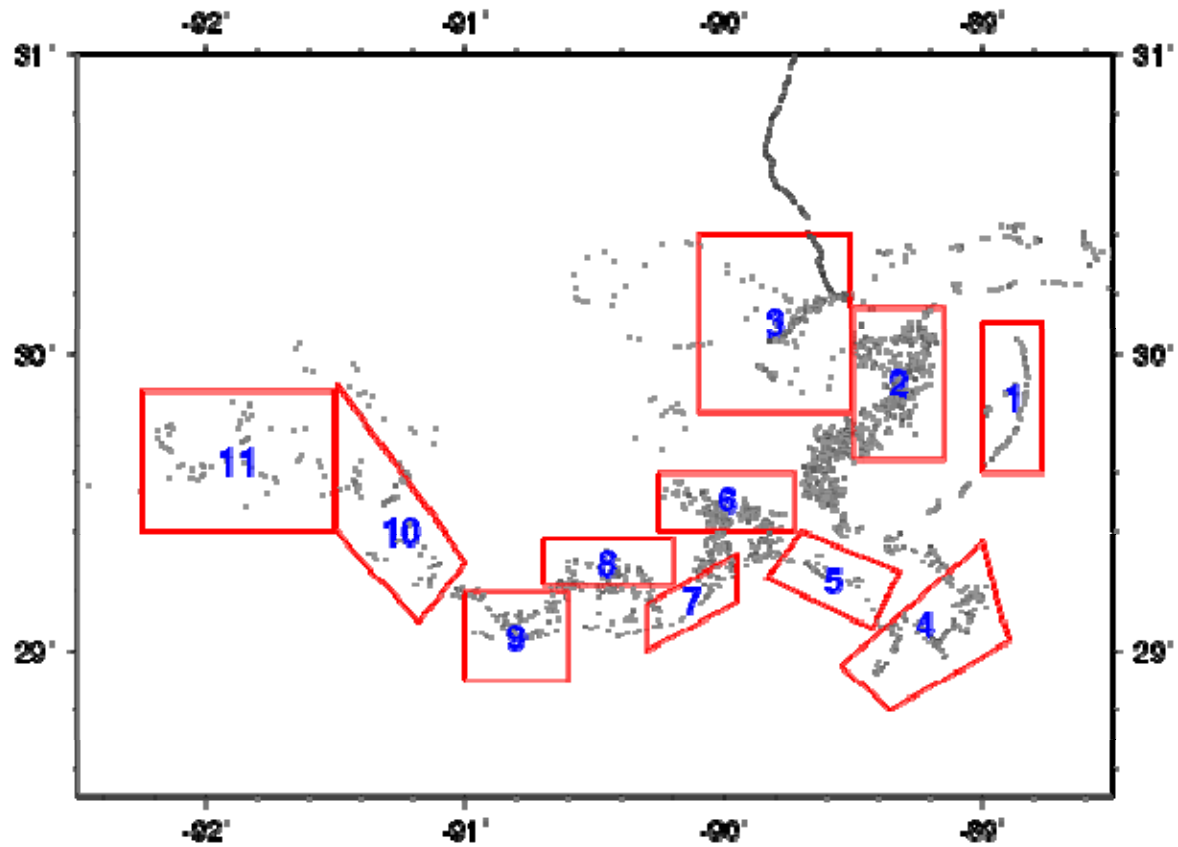
# State DEQ

- The DEQs released almost daily statements of oil spill information in pdf reports
- This data is not digitized.
- Covers different timeframes of the oil spill with modest datapoints
  - MS DEQ contained latitude and longitude for most incidents. It also sometimes described geographic coverage, not just points. MSU has developed a spreadsheet of these reports.
  - LA DEQ is similar, but covers the entire period and contains more data. However, it does not provide latitude and longitude. Geographic regions in the marsh or sounds are referenced instead. We are working on a spreadsheet, but it is tedious.

# MDEQ dataset example



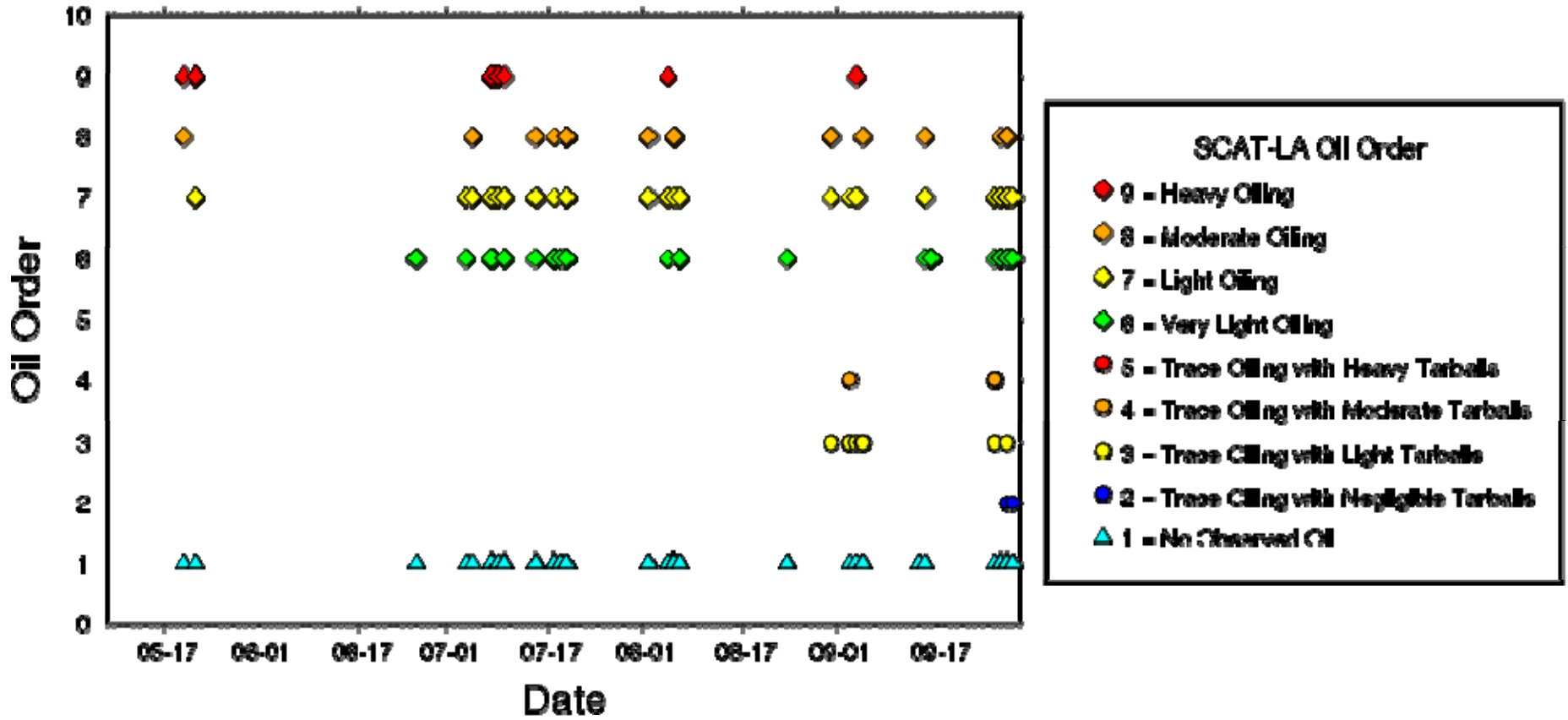
## Predefined Regions



1. Chandeleur Islands
2. Eastern Biloxi Marsh
3. LakeBorge / LakePontchartrain
4. Mississippi River Mouth
5. Sandy Point
6. Barataria Bay North End
7. Grand Isle / Fourchon
8. Terrebonne Bay / Timbalier Bay North End
9. Last Islands
10. Atchafalaya Delta
11. Russell Sage Mash / Vermillion Bay / West Cote Blanche Bay

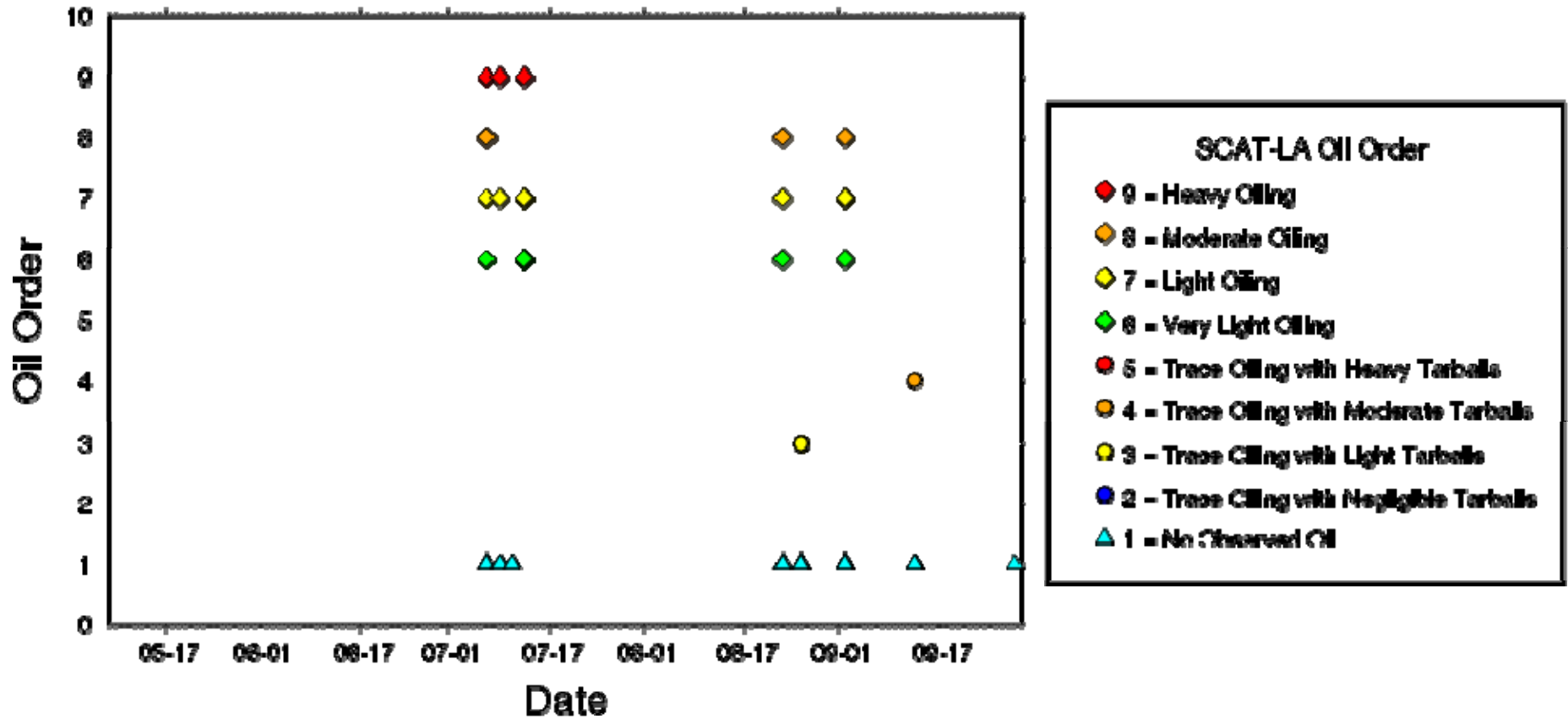
# Eastern Biloxi Marsh

## SCAT-LA Oil Observations - Region 2



## Lake Borgne and Lake Pontchartrain

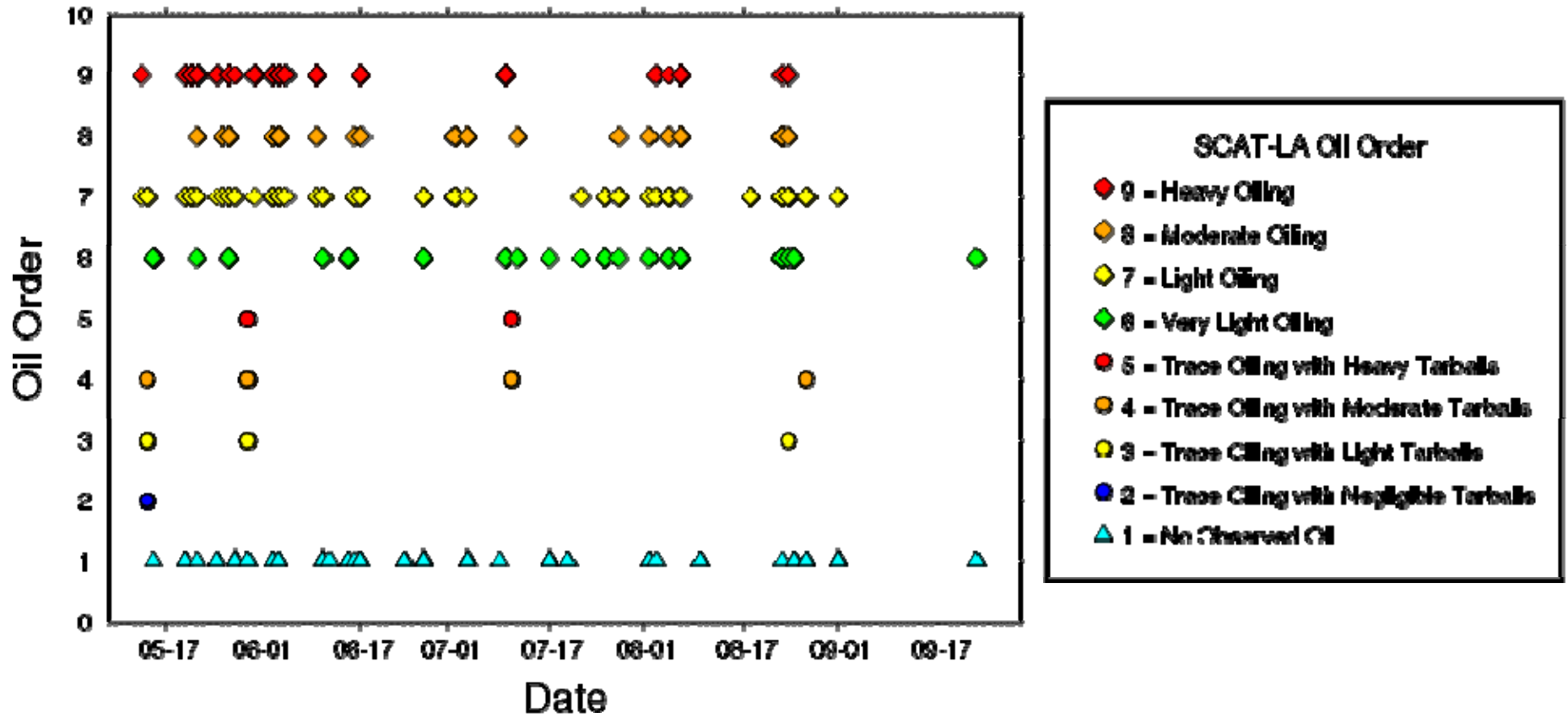
SCAT-LA Oil Observations - Region 3





# Grand Isle and Fourchon

SCAT-LA Oil Observations - Region 7



## Future work

- Development of oil spill databases for Louisiana DEQ and Lake Pontchartrain Basin Foundation
- Synthesize datasets for comprehensive analysis
- Analysis of all databases, with a summary of all oil incursion along coastline region, wetlands, and in the open waters
- Incorporate dispersion and evaporation components into oil spill model
- Validate oil spill model against database
- Overall goal: fate and transport analysis