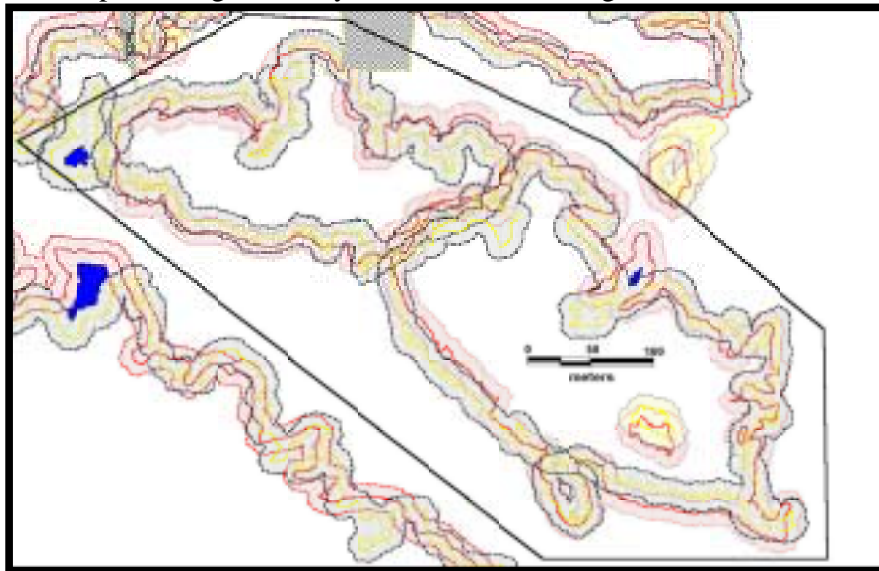


c) MS96M and MS98JL boundaries with buffers on MS98JL side-scan image, and areas representing boundary movement exceeding error tolerance.



d) MS96M and MS98JL boundaries with buffers, and polygons representing boundary movement exceeding error tolerance buffers. Areas of movement exceeding buffers = 263.3 m² to the south and west (Table 3). Boundary shifts from 1996 to 1998 are varied. Over half of the border in the left feature has shifted to the north and east. All of the northern border and half the southern border of the right feature have shifted to the south and west, while the other half of the southern border has shifted to the north and east.

Figure 19 (continued). c) MS96M and MS98JL boundaries with buffers, on MS98JL side-scan image. d) MS96M and MS98JL boundaries with buffers.