

Phases of an Oil Spill

Emergency Response

Damage Assessment (NRDA)

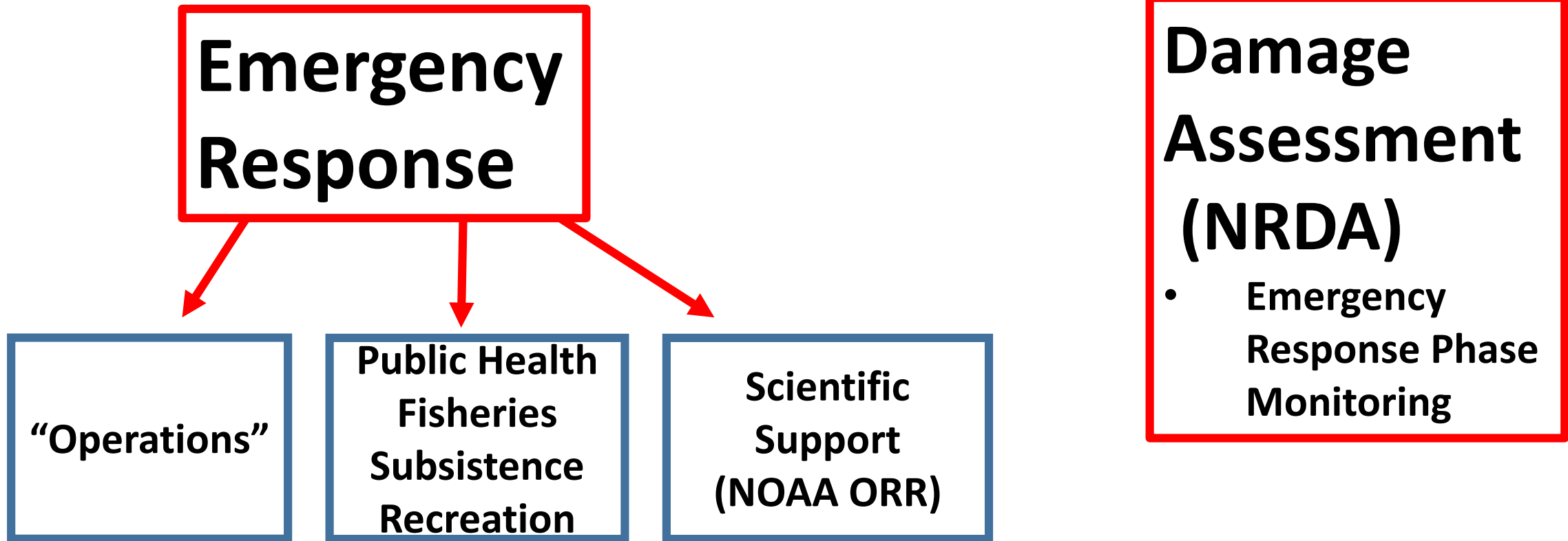
- Emergency Response Phase
- Monitoring
- Post Response Phase

Restoration

- Mostly Post Assessment Phase*

* May be emergency restoration in some spills

Select Components of an Oil Spill Emergency “Response”



Select Components of an Oil Spill Emergency “Response”

**Emergency
Response**

```
graph TD; ER[Emergency Response] --> Ops["Operations"]; ER --> PHFR[Public Health Fisheries Subsistence Recreation]; ER --> SS["Scientific Support (NOAA ORR)"]; DA[Damage Assessment (NRDA)] --> ERPM[Emergency Response Phase Monitoring];
```

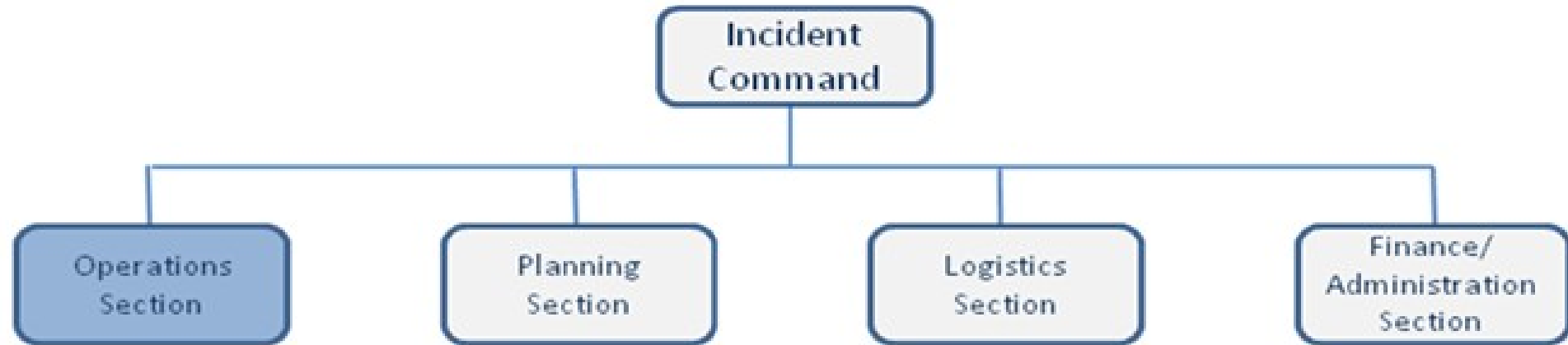
“Operations”

**Public Health
Fisheries
Subsistence
Recreation**

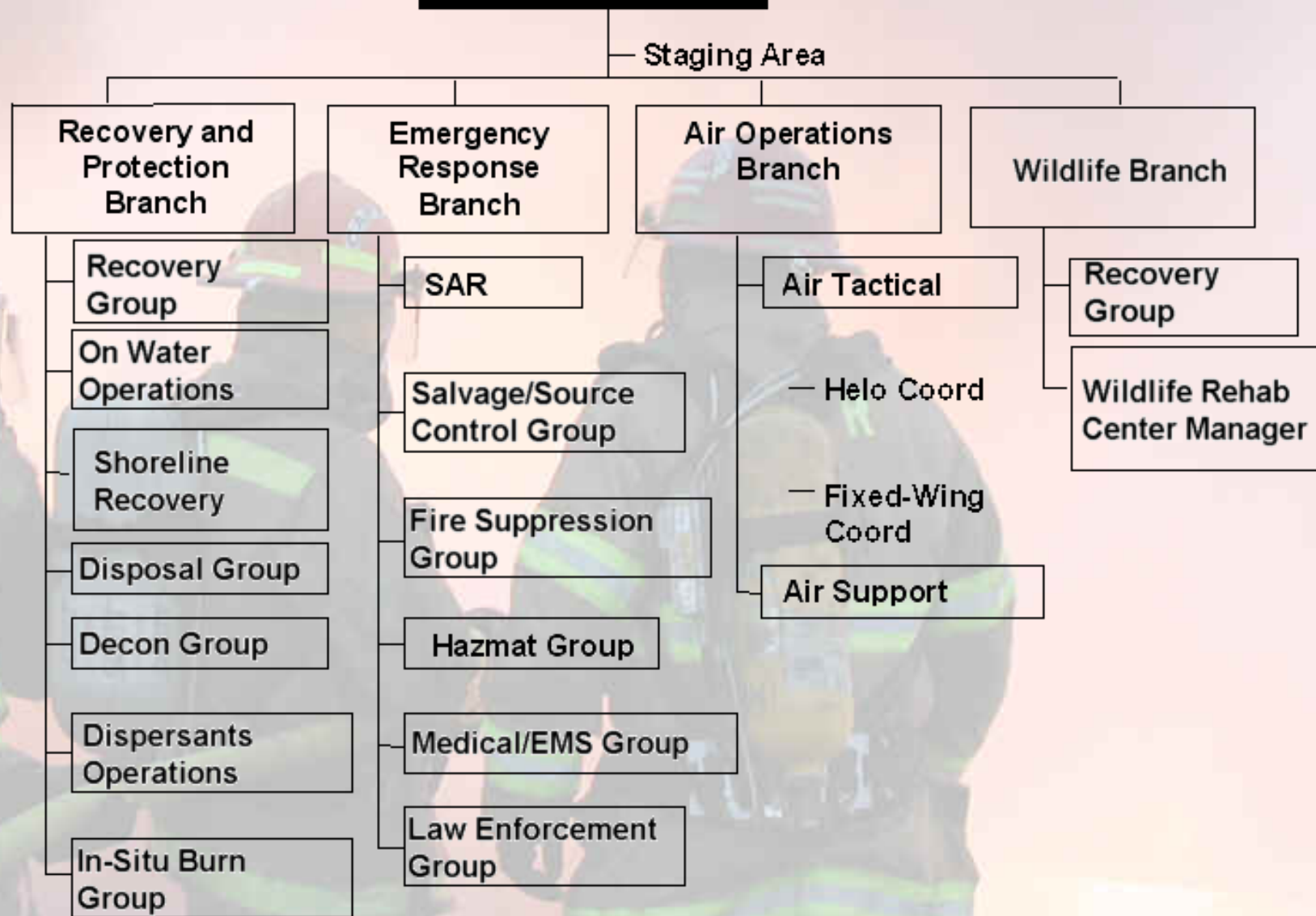
**Scientific
Support
(NOAA ORR)**

**Damage
Assessment
(NRDA)**

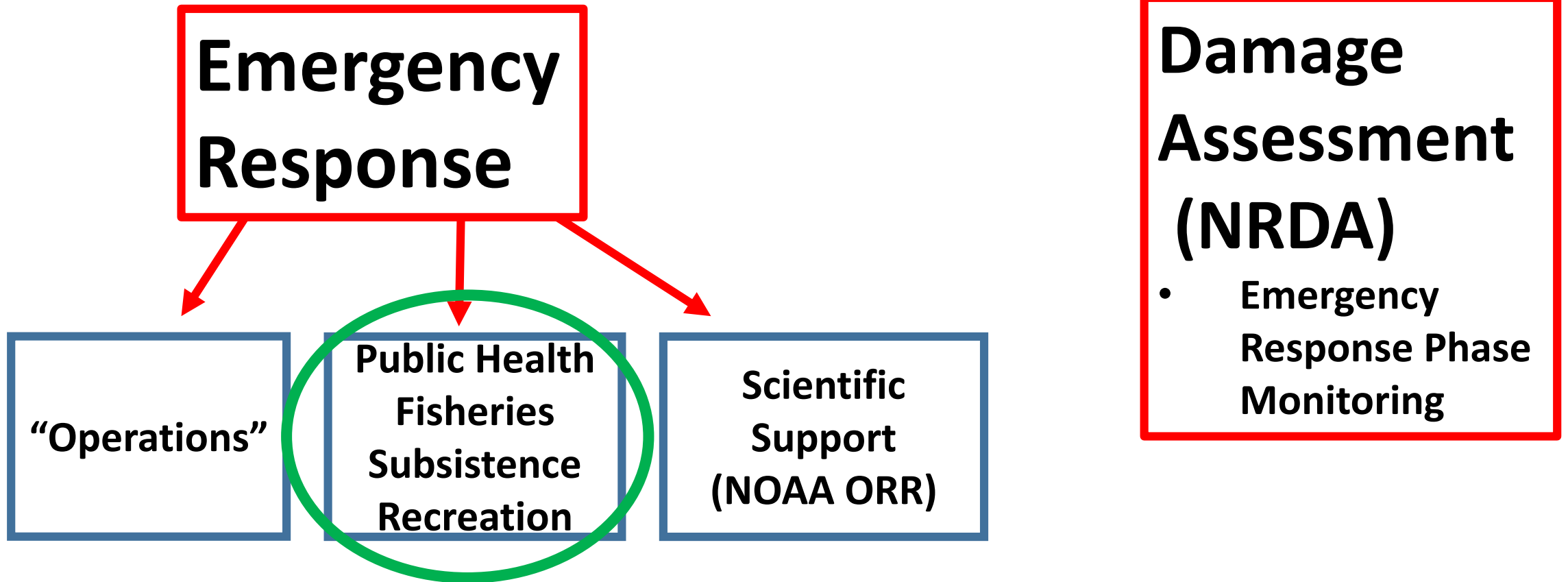
- **Emergency
Response Phase
Monitoring**



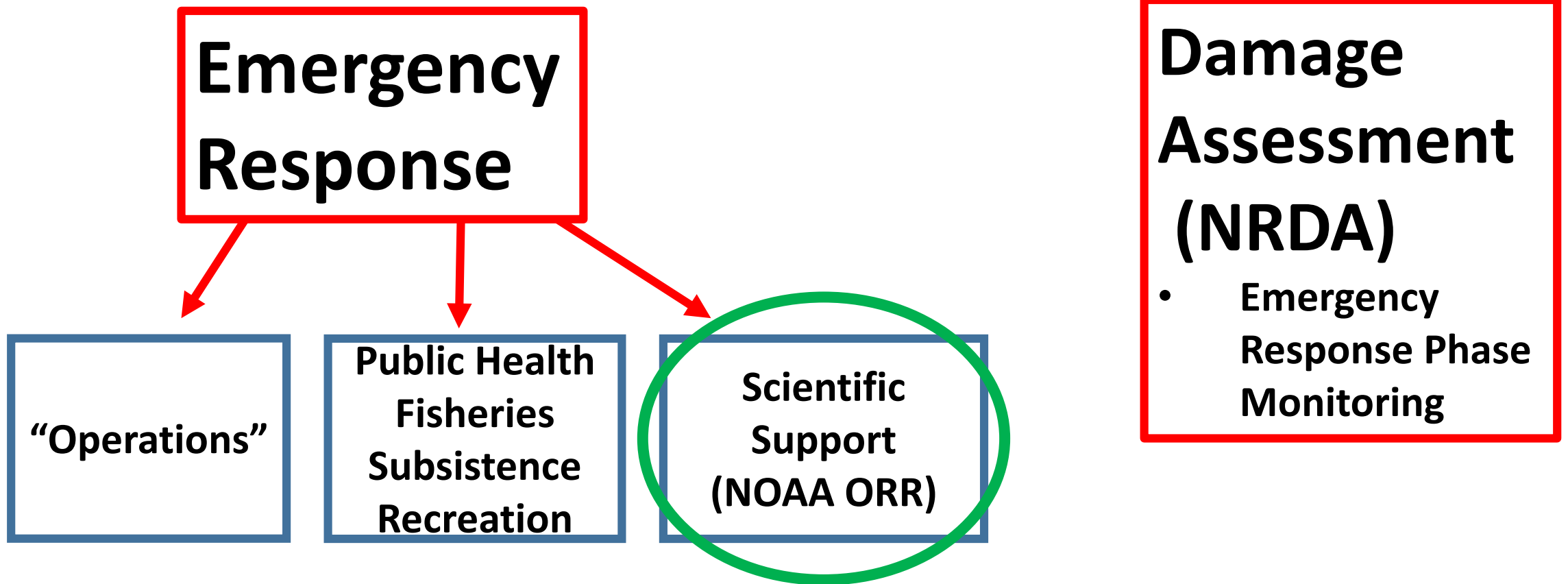
OPERATIONS SECTION



Select Components of an Oil Spill Emergency “Response”



Select Components of an Oil Spill Emergency “Response”





Scientific Support Role

Questions Guiding NOAA's Oil Spill Science Recommendations



Scientific Support Coordinator

Activities

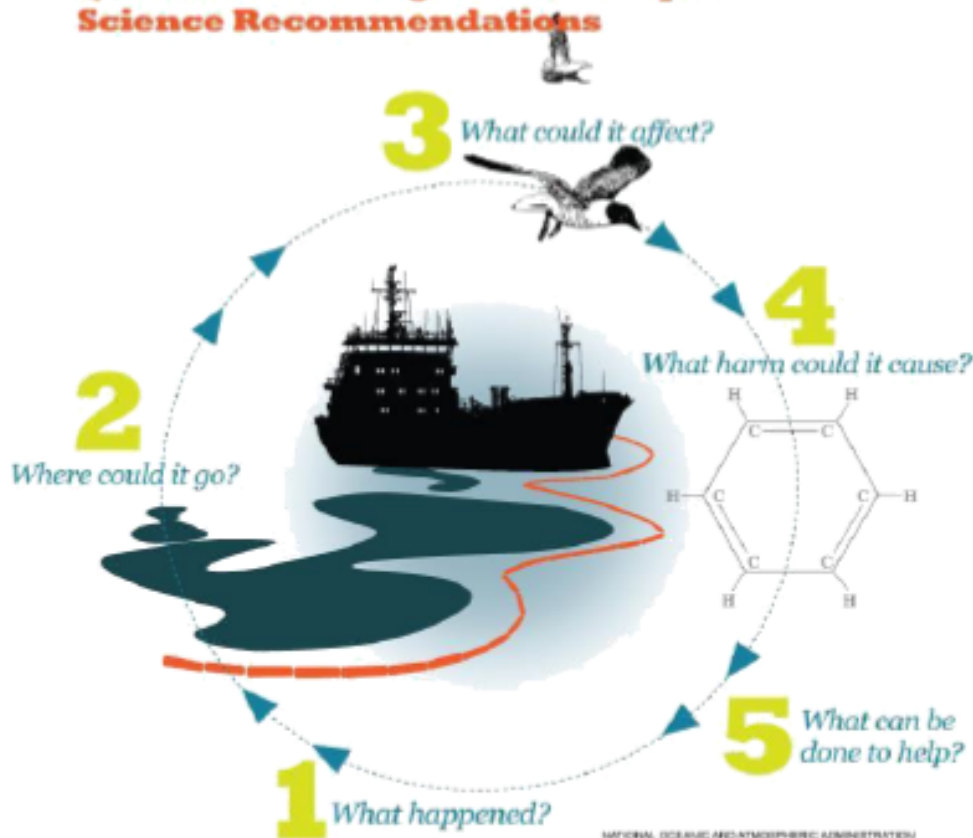
- Trajectory Modeling
- Identify resources at risk
- Evaluate cleanup strategies
- Perform shoreline assessments and aerial observations
- Coordinate NOAA resources (i.e. forecasts, fisheries)
- Analyze pollutant chemistry & environmental effects
- Data management
- Train emergency responders
- Coordinate scientific activities with academia and industry





Scientific Support Role

Questions Guiding NOAA's Oil Spill Science Recommendations



Scientific Support Coordinator

Activities

- Trajectory Modeling
- Identify resources at risk
- Evaluate cleanup strategies
- Perform shoreline assessments and aerial observations
- Coordinate NOAA resources (i.e. forecasts, fisheries)
- Analyze pollutant chemistry & environmental effects
- Data management
- Train emergency responders
- Coordinate scientific activities with academia and industry



Select Components of an Oil Spill Emergency “Response”

