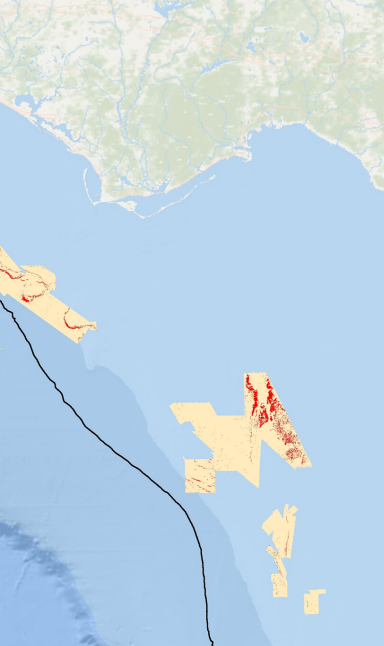




## **GRAY SNAPPER**

Also known as Mangrove Snapper, Gray Snapper are typically brown to dark gray in color and school in large groups. Juveniles have a dark stripe across the eyes. As adults they can grow up to 24in, or 10lbs. They are found in coastal waters.





[WWW.MARINE.USF.EDU/SCAMP](http://WWW.MARINE.USF.EDU/SCAMP)



@CSCAMPscience



**UNIVERSITY OF SOUTH FLORIDA**  
College of MARINE SCIENCE



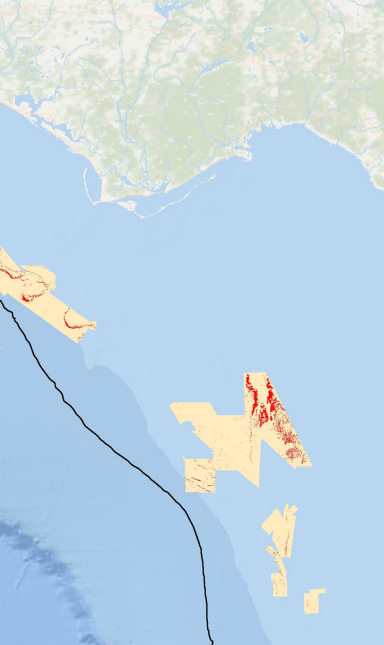
NFWF



## RED GROUPE R

Red Grouper are a brown to red reef fish species and often have white splotches along their bodies. They are excavators and build burrows in which they live. Growing up to 40in long and 50lbs, these fish begin life as females and transform into males after maturation.





[WWW.MARINE.USF.EDU/SCAMP](http://WWW.MARINE.USF.EDU/SCAMP)

 [@CSCAMPscience](https://twitter.com/CSCAMPscience)



**UNIVERSITY OF SOUTH FLORIDA**  
College of MARINE SCIENCE



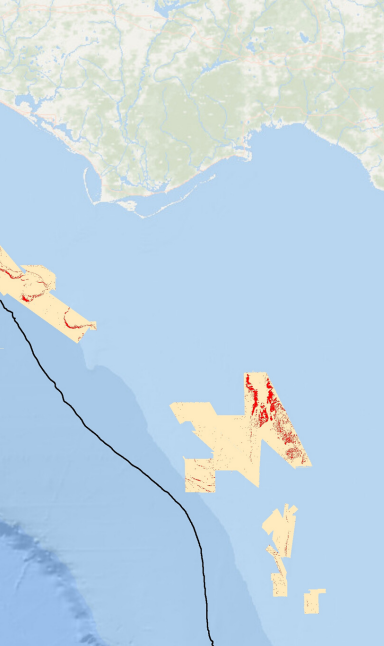
**NFWF**



## AMBERJACK

Amberjack are named for the bold amber stripe that extends across their head. They typically grow to an average of 40in and 40lbs and can live to be 17 years old. This species feeds primarily on crustaceans and other fish when full grown.





[WWW.MARINE.USF.EDU/SCAMP](http://WWW.MARINE.USF.EDU/SCAMP)



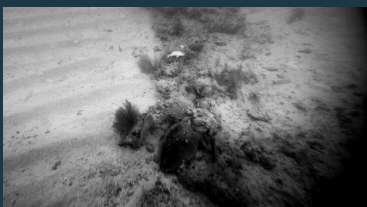
[@CSCAMPscience](https://twitter.com/CSCAMPscience)



**UNIVERSITY OF SOUTH FLORIDA**  
College of MARINE SCIENCE



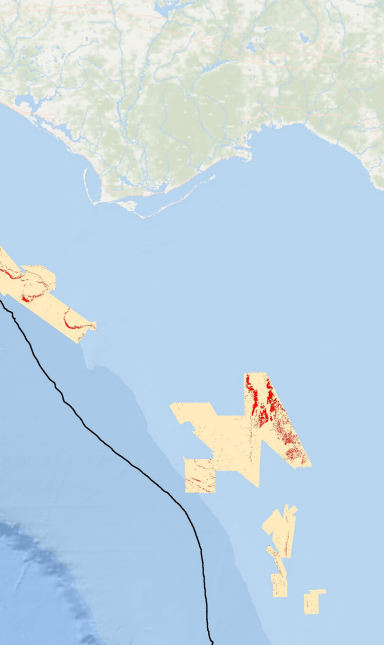
NFWF



## LOGGERHEAD SEA TURTLE

Loggerhead sea turtles are the most common species of sea turtle in the southeastern U.S. and frequently nest along the Florida and Alabama coasts in the Gulf of Mexico from late April to early September. This species is facing a population decline due to vessel strikes, habitat degradation and entanglement in marine debris. Nine of their global populations are currently listed as endangered or threatened under the Endangered Species Act.





[WWW.MARINE.USF.EDU/SCAMP](http://WWW.MARINE.USF.EDU/SCAMP)



[@CSCAMPscience](https://twitter.com/CSCAMPscience)



**UNIVERSITY OF SOUTH FLORIDA**  
College of MARINE SCIENCE



NFWF